




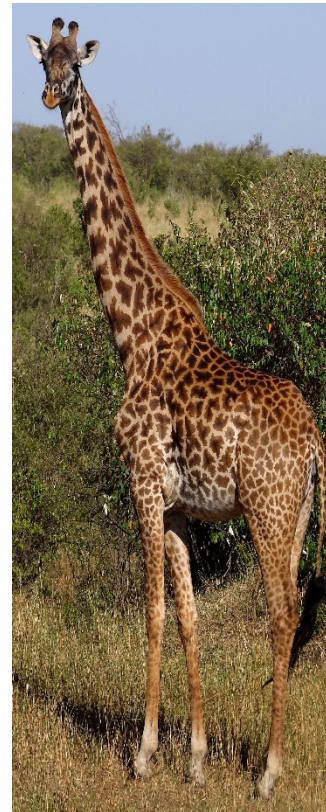
ECC
ENVIRONMENTAL
COMPLIANCE CONSULTANCY



The Proposed Jindal Iron Ore Mine on EPLs 4013 & 4194, Khomas Region

MINING LICENSE APPLICATION
ESIA PROCESS - SCOPING PHASE

16 April 2024



Welcome



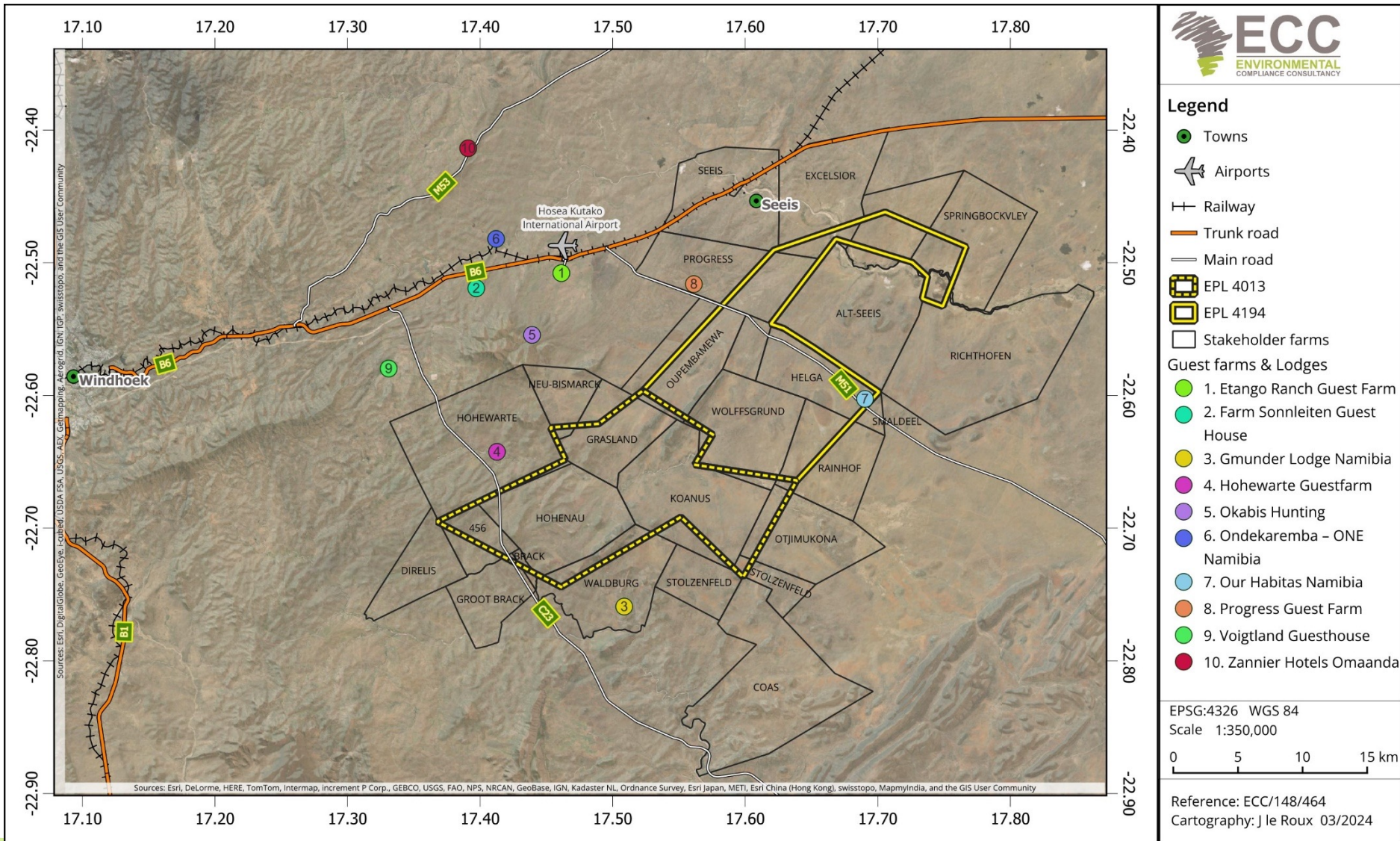
Agenda

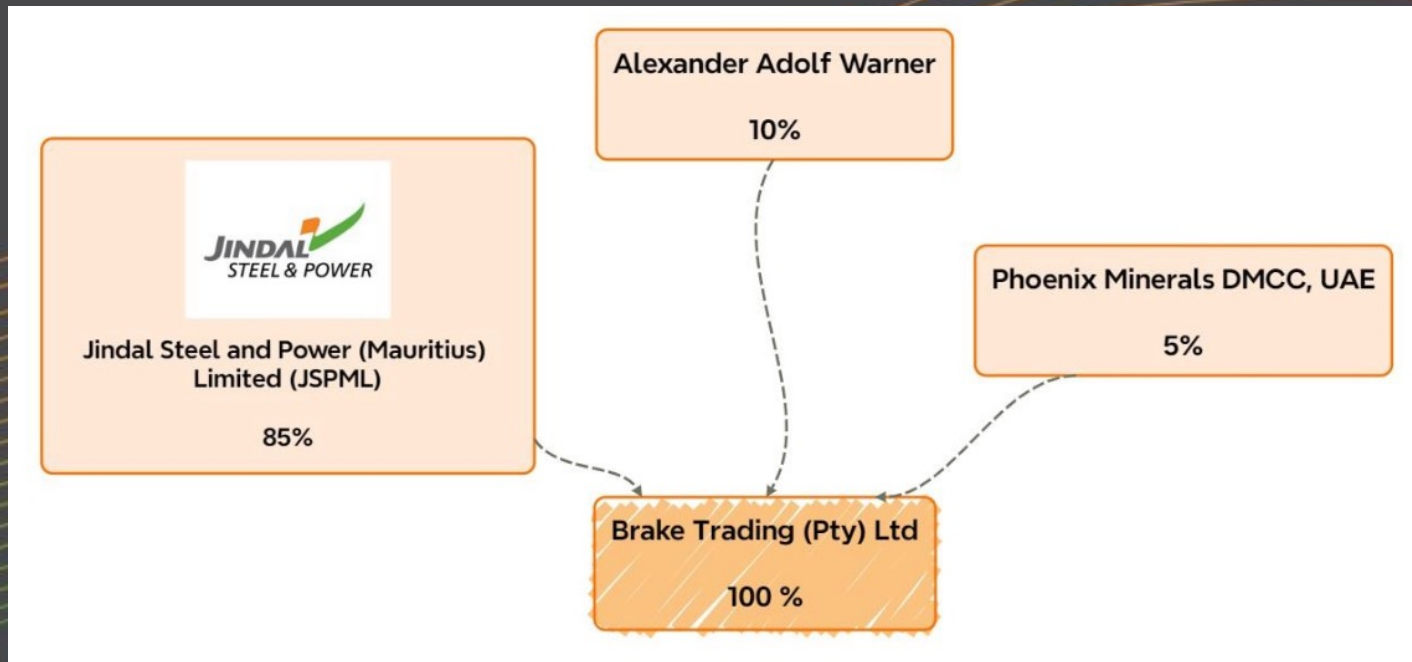
- Meeting Objectives
- Project Presentation — *Presented by Brake Trading (Pty) Ltd*
- Environmental & Social Impact Assessment (ESIA) Process — *Presented by ECC*
- Baseline/Specialist Studies — *Presented by ECC*
- Potential Biophysical & Socio-economic impacts — *Presented by ECC*
- Q&A

Public meeting objectives

- Inform the public and provide information detailing the proposed Jindal Iron Ore Mine on EPLs 4013 & 4194.
- Provide an overview of the Environmental and Social Impact Assessment (ESIA) process.
- Take into consideration all **public concerns, questions** and **comments** to *incorporate them into the environmental assessment process.*

Locality and Stakeholder Map





Brake Trading (Pty) Ltd



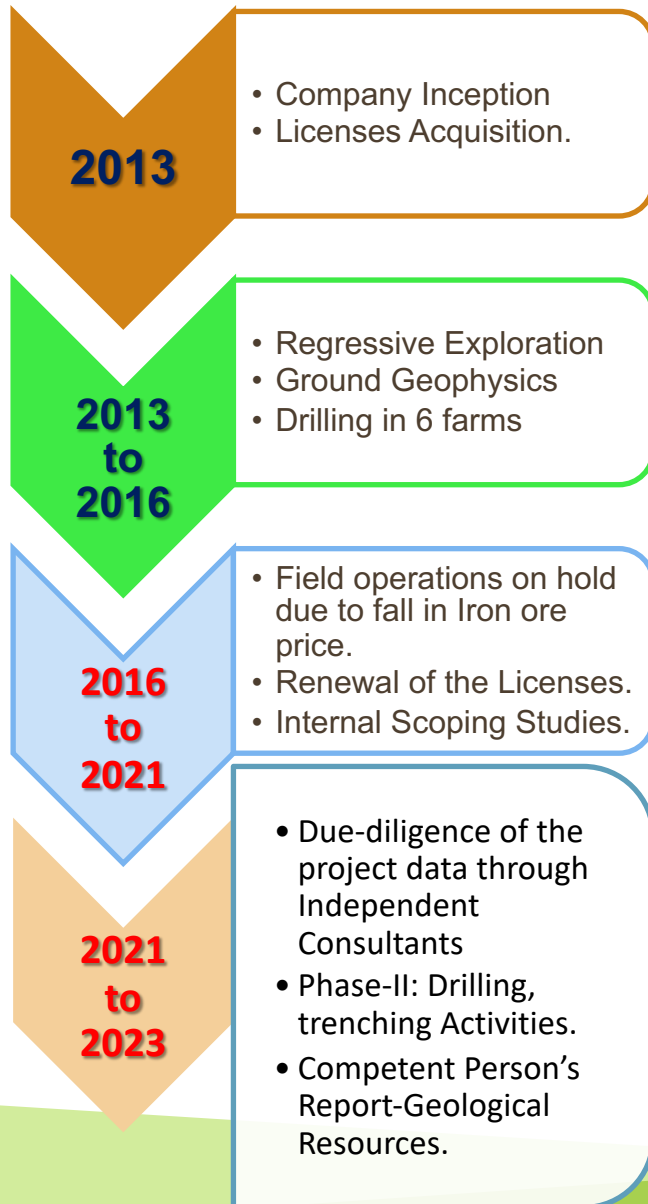
SHARE HOLDING OF ACTIVE LICENSES:

Brake Trading (Pty) Ltd holds EPL 4013 and EPL 4194, located in Dordabis, in the Eastern area of the province of Khomas region.

Jindal Steel and Power (Mauritius) Limited (JSPML) has an 85% shareholding in Brake Trading and has the management control.

S.No.	Interested Commodity	EPL holding Company	EPL Number	Area	Share pattern of EPL holding Company
1.	Iron Ore Iron Ore	Brake Trading (Pty) Limited	4013	21679.92 (ha)	JSPML - 85% Alexander Adolf Warne - 10% Phoenix Minerals DMCC - 5%
2			4194	21290.29 (ha)	JSPML - 85% Alexander Adolf Warne - 10% Phoenix Minerals DMCC - 5%

Milestones achieved:



ON-GOING ACTIVITIES

2023-24

- Magnetic separation study
- Pelletisation Study
- Completion of Geotechnical Study
- Award of contract for EIA/EMP Study
- Detail Feasibility Study

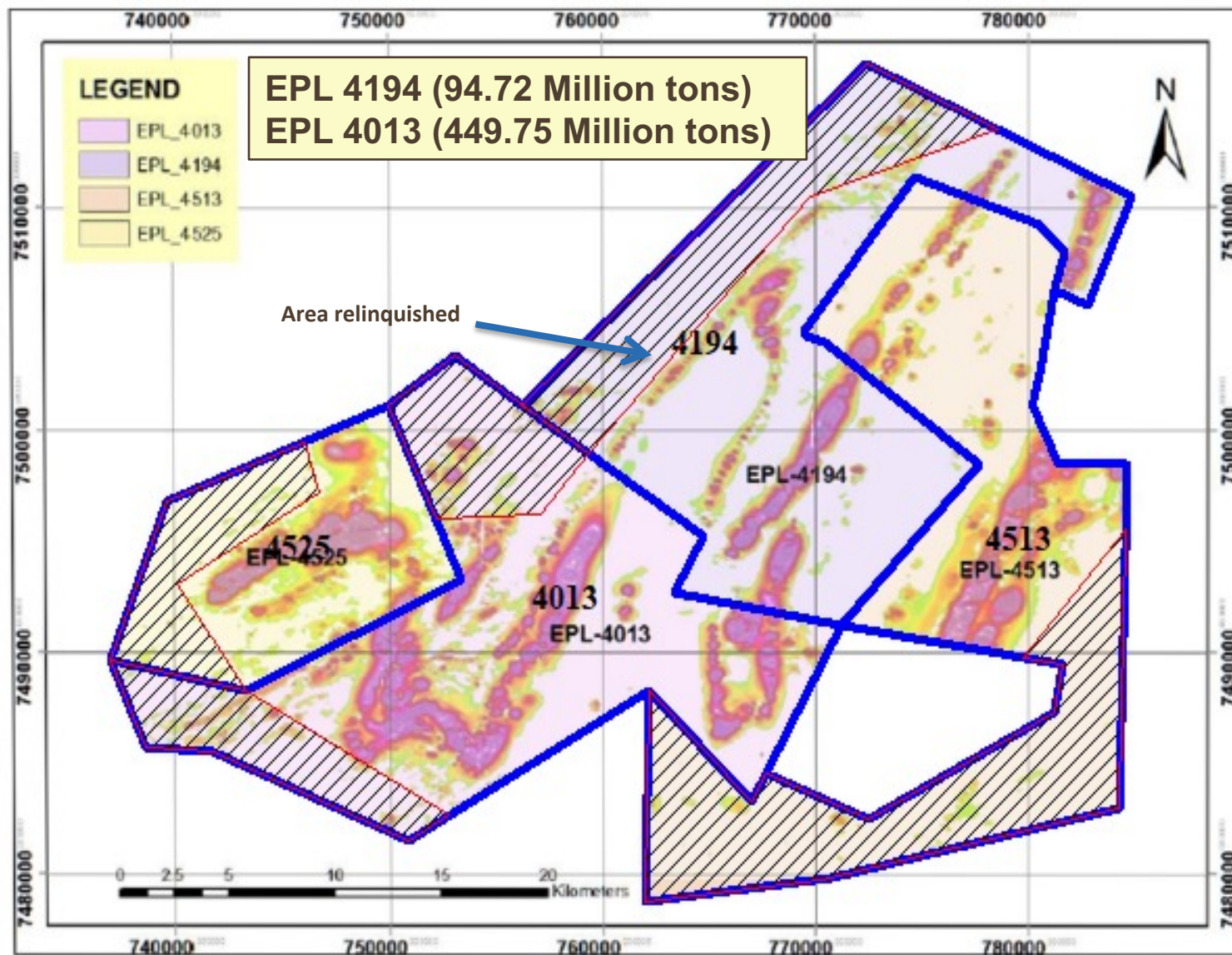
2024-25

- Completion of logistics Study
- Completion of Supporting Documents
- Filing of Mining License Application
- Approval from nodal authorities.
- Consultant engagement.

2025-27

- Completion of DFS Report.
- Initial Infrastructure plan for mining & processing.
- Development of Mine Infrastructure.
- Development of Processing Plant
- Opening of Box cut.
- Production & Export.

Iron Ore EPLs with Airborne Magnetics:



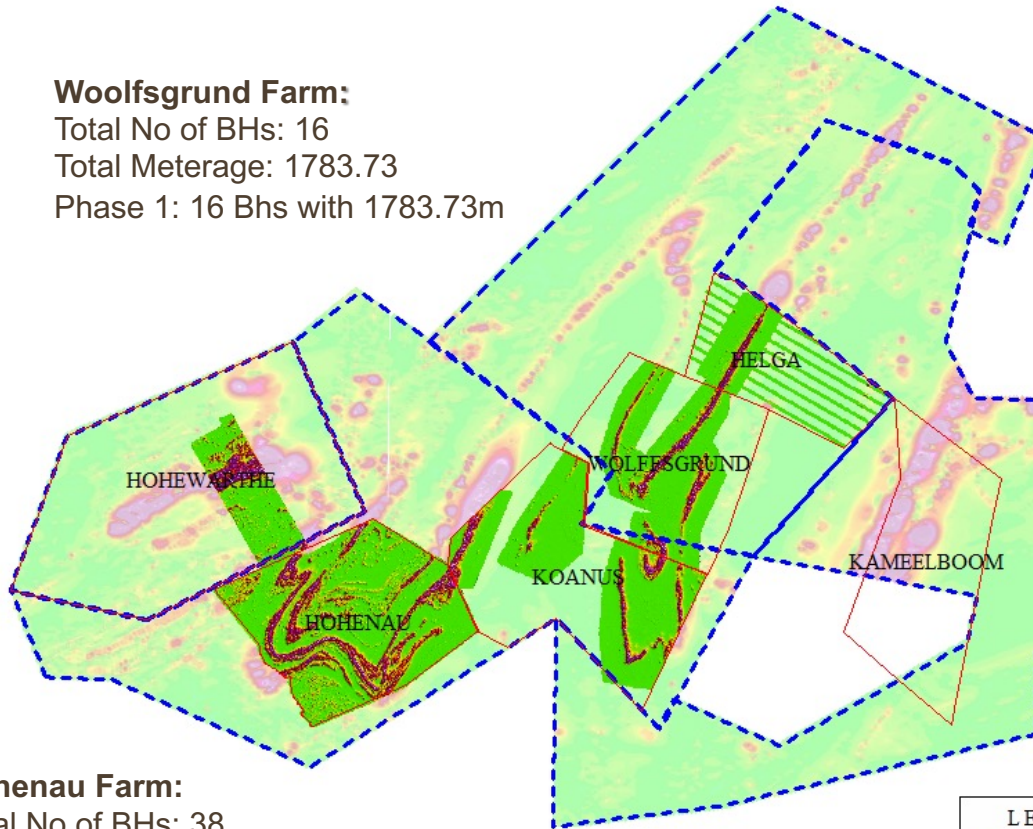


Woolfsgrund Farm:

Total No of BHs: 16
 Total Meterage: 1783.73
 Phase 1: 16 Bhs with 1783.73m

Helga Farm:

Total No of BHs: 68
 Total Meterage: 11780.79
 30 Trenches with 1175m of excavation
 Phase 1: 54 Bhs with 9503.79m
 Phase 2: 14 Bhs with 2277.00m



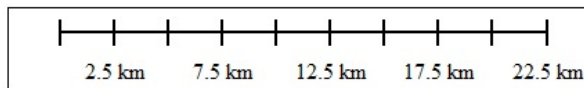
Koanus Farm:

Total No of BHs: 90
 Total Meterage: 9863.85
 28 Trenches with 3210m of excavation
 Phase 1: 48 Bhs with 6129.63m
 Phase 2: 42 Bhs with 3734.22m

Hohenau Farm:

Total No of BHs: 38
 Total Meterage: 7334.98
 Phase 1: 38 Bhs with 7334.98m

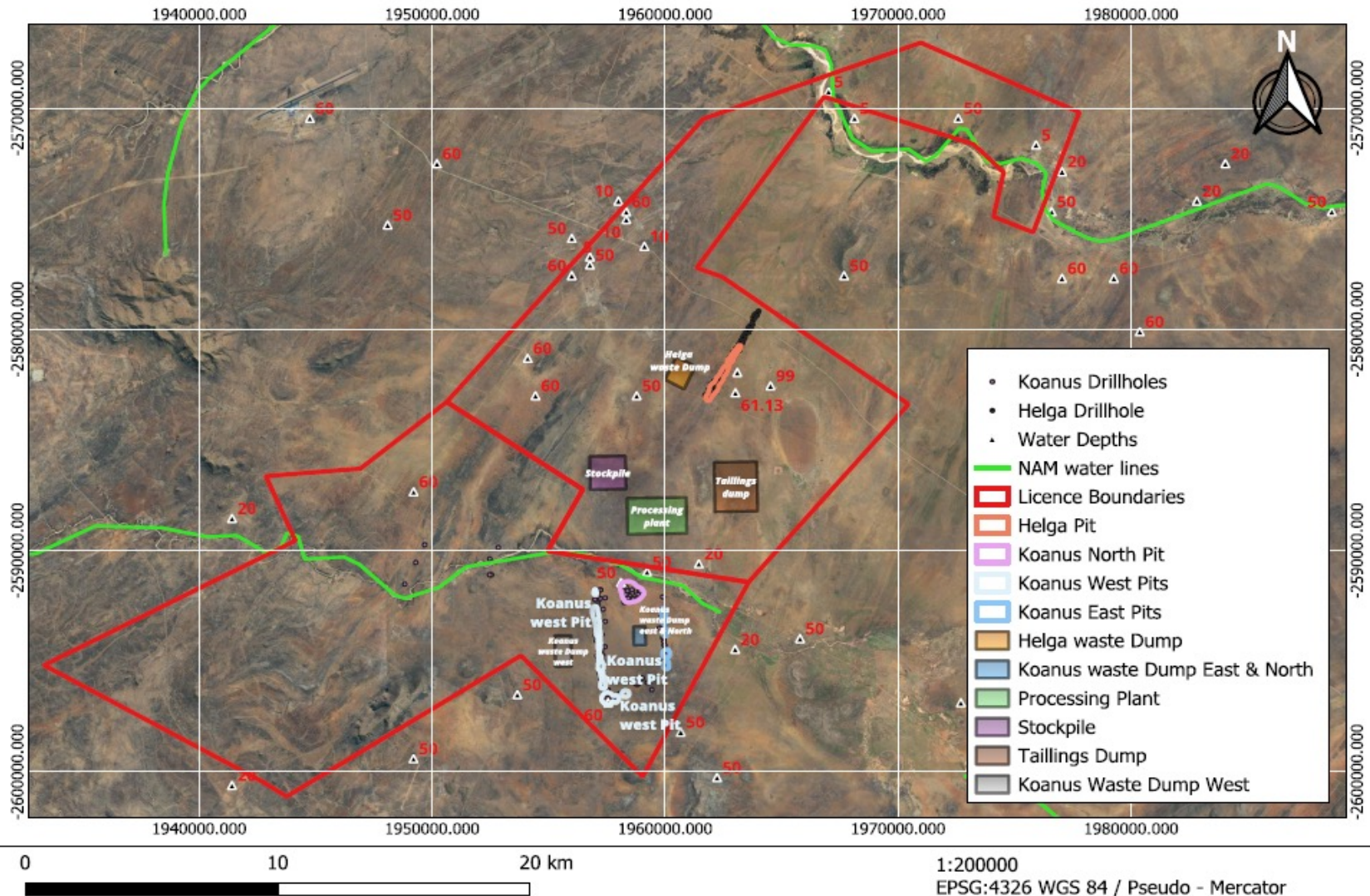
LEGEND	
	EPL 4013
	EPL 4194
	EPL 4513
	EPL 4525
	HELGA FARM
	HOHENAU FARM
	HOHEWARTHE FARM
	KAMEELBOOM FARM
	KOANUS FARM
	WOOLFSGRUND FARM



EXPLORATION ACTIVITIES AND RESULTS:

Sl. No.	EPL	Exploration Progress	Head Grade	Recovery	Product Grade	Possible / Indicated Resources in EPL	CPR Resources.
1	4013	Ground Mag - 2484.54-line KM Drilling - 128 BHs; 17198.83 m No. of trenches - 28; 3210 m No. of Samples - 8402	<i>Fe - 27.35%</i> <i>SiO₂ - 40.51%</i> <i>Al₂O₃ - 5.78%</i> <i>P - 0.3029%</i> <i>S - 0.0404%</i>	22.92% @ 38Mic	<i>Fe - 69.03%</i> <i>SiO₂ - 2.73%</i> <i>Al₂O₃ - 0.46%</i> <i>P - 0.0198%</i> <i>S - 0.0022%</i>	- Magnetic Anomaly: 83.1 KM - Average Thickness: 32.12m - Average SPG: 3.37 g/cc - Depth Consideration: 50m *Resource: 449.75 million tons*	CPR – Received EIA/EMP - by Dec-24 KOANUS – 298 MT
2	4194	Ground Mag - 892.68-line KM Drilling - 84 BHs; 13564.52 m No. of trenches - 30; 1175 m No. of Samples - 4118	<i>Fe - 29.34%</i> <i>SiO₂ - 34.88%</i> <i>Al₂O₃ - 6.09%</i> <i>P - 0.446%</i> <i>S - 0.1236%</i>	33.96% @ 38Mic	<i>Fe - 66.09%</i> <i>SiO₂ - 4.22%</i> <i>Al₂O₃ - 0.57%</i> <i>P - 0.0274%</i> <i>S - 0.0326%</i>	- Magnetic Anomaly: 29.0 KM - Average Thickness: 18.88 m - Average SPG: 3.46 g/cc - Depth Consideration: 50m *Resource: 94.72 million tons*	CPR – Received EIA/EMP - by Dec-24 HELGA – 42 MT

Infrastructure & Mine Layout Plan:



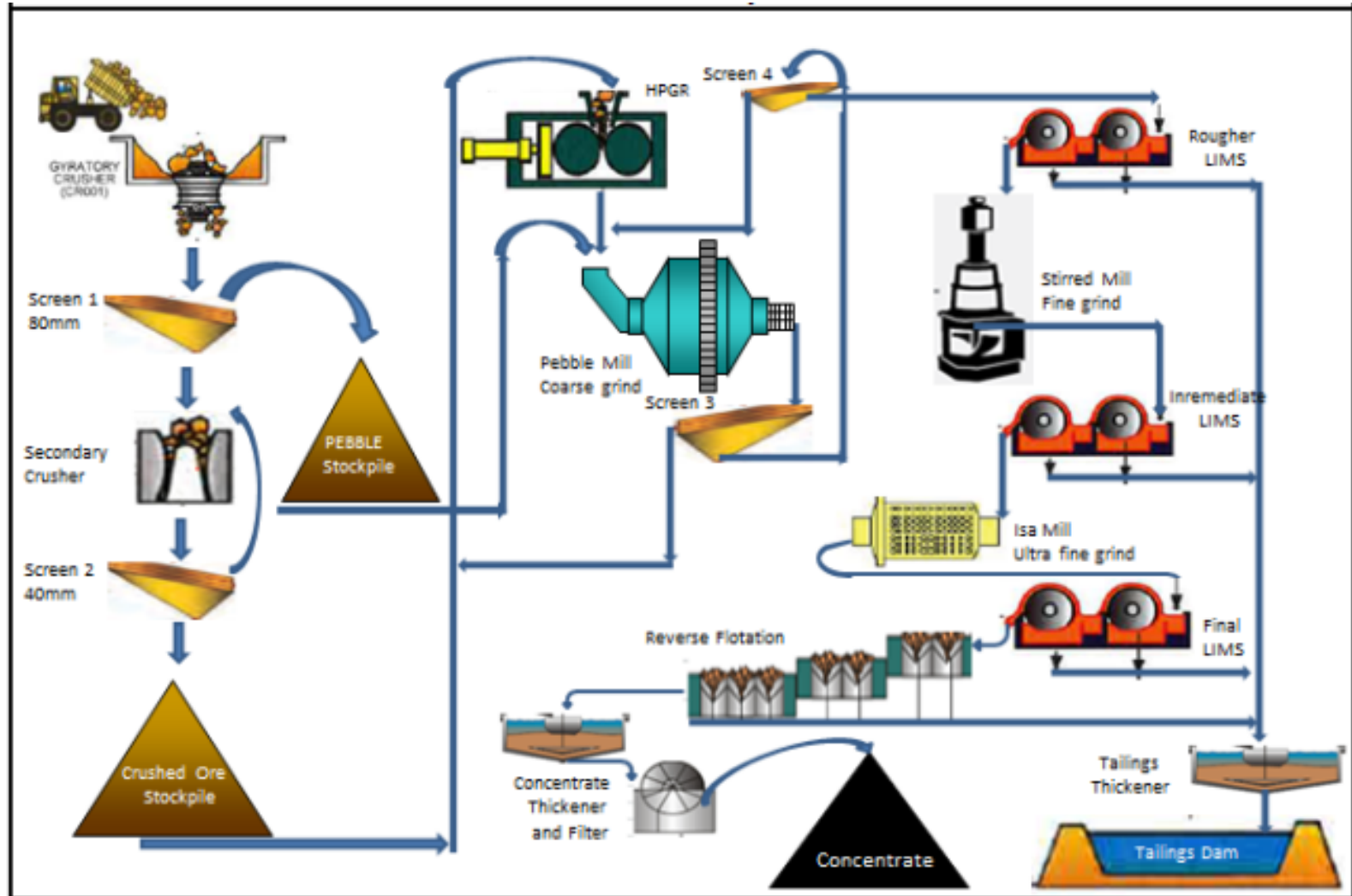
Department: Civil, Mining and Process Engineering



NAMIBIA UNIVERSITY
OF SCIENCE AND TECHNOLOGY

13 Jackson Kaujeva Street T: +264 61 207 9111
Private Bag 13388 F: +264 61 207 2444
Windhoek W: www.nust.na
NAMIBIA

CONCEPTUAL FLOW SHEET - Crushing, Milling & Magnetic Separation:



CURRENT ACTIVITIES:

GEOTECHNICAL AND PIT OPTIMIZATION STUDY

Department: Civil, Mining and Process Engineering



NAMIBIA UNIVERSITY
OF SCIENCE AND TECHNOLOGY

13 Jackson Kaujeua Street T: +264 61 207 9111
Private Bag 13388 F: +264 61 207 2444
Windhoek W: www.nust.na
NAMIBIA

MAGNETITE LIBERATION TEST WORK ON BULK
SAMPLES



ENVIRONMENTAL AND SOCIAL IMPACT ASSESSMENT



Facility Study Overview:

Sl. No.	Responsible	Source	Action Completed	Required
WATER	City of Windhoek	Waste Water Treatment Plant	LOI Received	0.75 - 0.9 Million M ³
POWER	NAMPOWER	Nampower/African Grid Imports	Application Requested	20 MW
	Private Power Producers	Own Power Generation (PV/Diesel)	LOIs Received from 5 Parties	
TRANSPORT	TRANSNAMIB	Near by Rail siding	Option 1: Rolling stocks, Upgradation by Jindal	30-50 KM from pit to rail siding, 350-400 KM from Rail siding to Port siding, 20-30 KM from port rail siding to Port.
			Option 2: Rolling stocks, Upgradation by Transnamib	
			Option 3: Sharing Capital (Negotiations)	
	Road transport	Logistics providers	Initial requirement informed to providers	
PORT	GRAINROD	Namport	LOI received for 100,000 MT stockpile facility	2.00 Million tons/Year
PORT SIDING	City of Walvisbay	Near Dune -7 (Land to be purchased)	Feasibility study	2.00 MT/Year

Thank You



Environmental Assessment Practitioner (EAP)

- Environmental Compliance Consultancy Pty Ltd (ECC)
- Independent, objective and unbiased
- Evidence and risk-based approach
- Leverage Namibian public, local stakeholder and specialist knowledge and expertise to guide the ESIA process
- Request active public and stakeholder participation throughout the ESIA process

ESIA Process

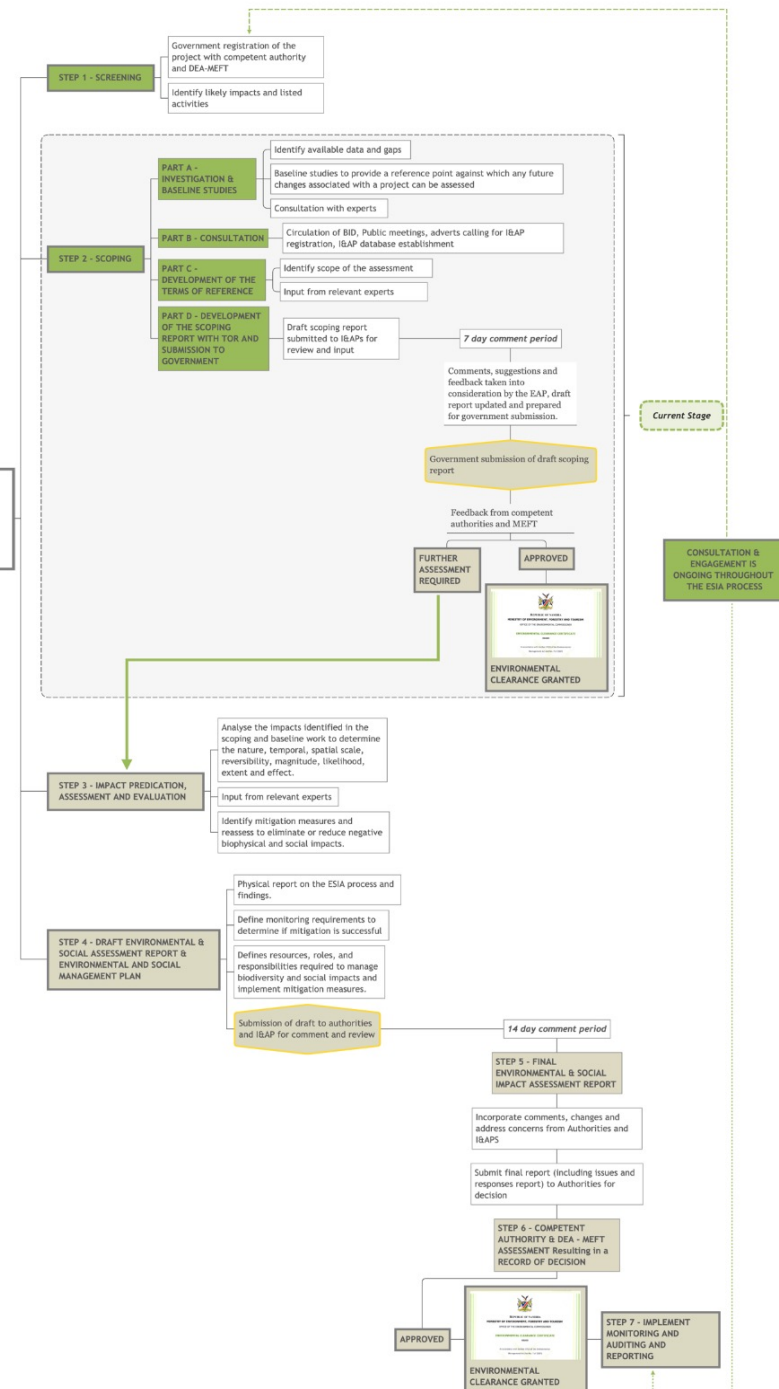
1. Screening: *Complete*

- DEA Portal (APP – 003097)

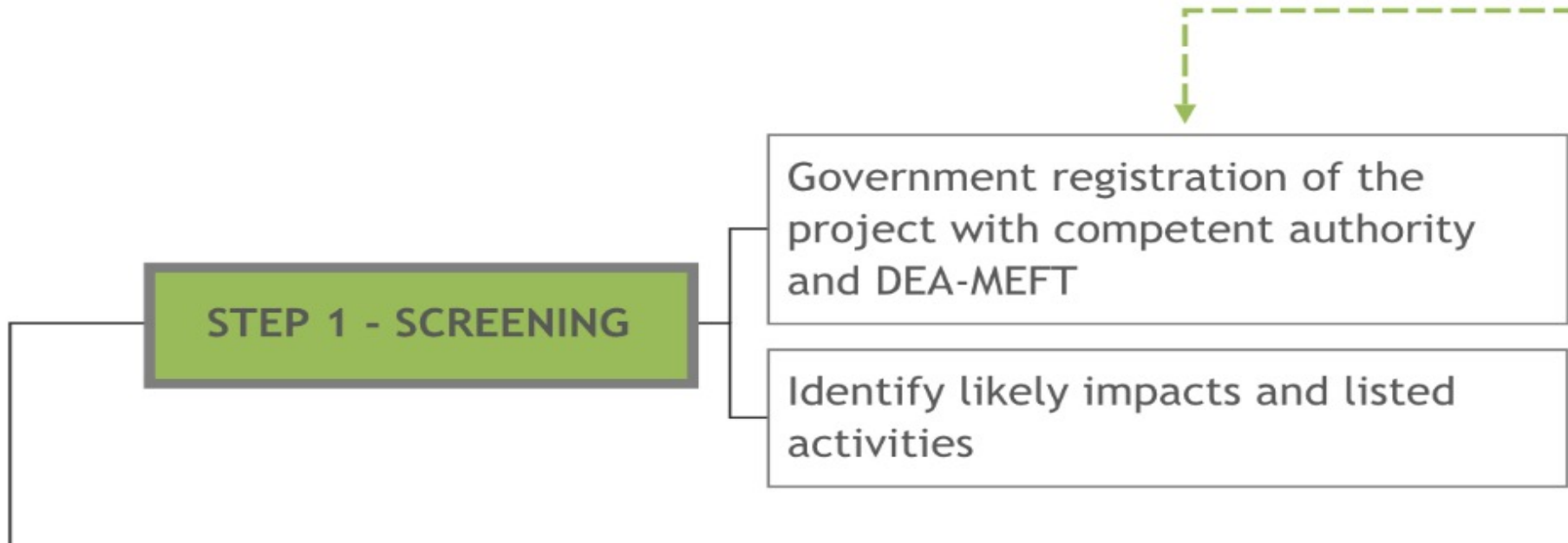
2. Scoping: *Current Phase*

- Public Participation
- Develop Terms of Reference (ToR) for the full ESIA
- Conduct Baseline and Specialist Studies

3. Assessment Phase: *To come*



Step 1 - Screening Phase



ECC Application Triggers



- Screening (DEA PORTAL)

ACTIVITIES THAT TRIGGERED A CLEARANCE CERTIFICATE APPLICATION	EIA SCREENING FINDING
<p>ENERGY GENERATION, TRANSMISSION AND STORAGE ACTIVITIES</p>	<ul style="list-style-type: none"> • The mine will connect to the NamPower grid. • There is a possibility that a solar power station will be constructed for the generation of electricity. • The generated electricity will be used to supply electricity to the mine and the potential surplus redirected into the grid power system.
<p>WASTE MANAGEMENT, TREATMENT, HANDLING AND DISPOSAL ACTIVITIES</p>	<ul style="list-style-type: none"> • The proposed mining operations and process plant triggers this activity, as both fuel and hazardous substances are required for mining and processing activities. • A lined tailings storage facility will be constructed. • Licenses will be obtained for all hazardous substances that will need to be stored on the site. • Additionally, there will be a laboratory on site that may generate hazardous waste.

ECC Application Triggers

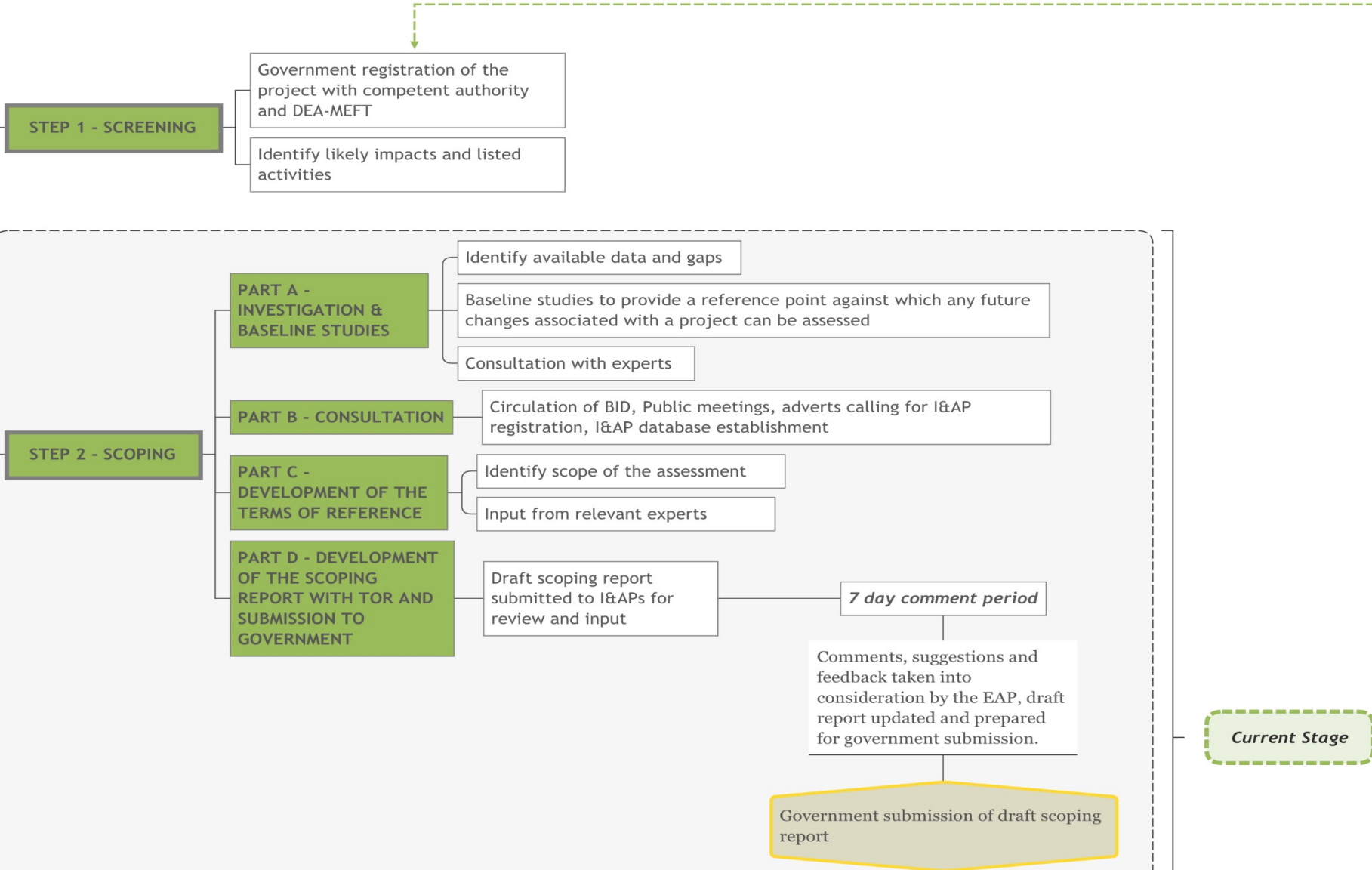


ACTIVITIES THAT TRIGGERED A CLEARANCE CERTIFICATE APPLICATION	EIA SCREENING FINDING
<p>MINING AND QUARRYING ACTIVITIES</p>	<ul style="list-style-type: none"> • This listed activity infers the provisions of the Minerals (Prospecting and Mining) Act 33 of 1992. The project is a mine, which therefore triggers this listed activity. • The mine infrastructure will include mine pits, dump facilities, stockyards, mining office, workshop, admin building, health & safety wing, laboratory, canteen, processing plant, conveyor line, filter press yard, concentrate yard, and dispatch line.
<p>WATER RESOURCE DEVELOPMENTS</p>	<ul style="list-style-type: none"> • This Project falls within a water-controlled area. • Ground and surface water may be abstracted or sourced for the operation. • Groundwater will be abstracted to support the operational activities through identified abstraction boreholes, with an approved abstraction permit, from the Department of Water Affairs, as required by the Water Act, No. 54 of 1956 and Water Resources Management Act • Surface water may be abstracted from the Oanob dam for operational activities. • Potential Diversion of the Olifants River as this river runs through the planned open pit areas. • Process water ponds will be constructed to provide water for the processing plant. • A pollution control dam (PCD) will be constructed to catch and contain dirty water on site, this is in the processing plant. • Pipeline systems will be used to transport water or slurry within the site. • Wastewater from the Ujams wastewater treatment plant • The processing plant will require approximately 1.0 to 1.5 Mm³/annum of water.

ECC Application Triggers

ACTIVITIES THAT TRIGGERED A CLEARANCE CERTIFICATE APPLICATION	EIA SCREENING FINDING
<p>FORESTRY ACTIVITIES</p>	<ul style="list-style-type: none"> • Vegetation clearing will be required for site construction and infrastructure establishment.
<p>HAZARDOUS SUBSTANCES TREATMENT, HANDLING AND STORAGE</p>	<ul style="list-style-type: none"> • The proposed mining operations and processing plant trigger this activity, as both fuel and hazardous substances are required for mining and processing activities. • Bulk fuel will be stored onsite for refueling the mining fleet of approximately 30,000-50,000 L/day in the first year of operation. • Consumer installation certificates are required for bulk fuel storage and dispensing. • Licenses will be obtained for all hazardous substances that will need to be stored on the site. • An onsite metallurgical laboratory will be required for site operations and small quantities of various lab chemicals will be used and stored on site.
<p>INFRASTRUCTURE</p>	<ul style="list-style-type: none"> • Towers for communication will need to be constructed, thus cables and telecommunication lines will be put in place. • Powerlines and telemetry for operational requirements, water and tailings slurry pumping will be required. • Possible Diversion of the M51 roadway.

Step 2 – Scoping Phase



Public Notification & Participation



- Notification of the Project: newspaper adverts, site notices and identified stakeholder letters sent.

Tuesday April 2nd, 2024

Wednesday April 10th, 2024

NOTICE OF AN ENVIRONMENTAL ASSESSMENT AND PUBLIC CONSULTATION
PROPOSED JINDAL IRON ORE PROJECT ON EPLS 4013 & 4194, KHOMAS REGION, NAMIBIA

Environmental Compliance Consultancy (Pty) Ltd provides this notice to members of the public that an application for an environmental clearance certificate in accordance with the Environmental Management Act, no. 7 of 2002 will be made for the proposed Jindal Iron Ore Project on EPLs 4013 and 4194 Region, Namibia. Members of the public are invited to register as an interested and affected party (IAP), are invited to attend a public meeting and provide input into the environmental clearance certificate application process.

Applicant: Brake Trading (Pty) Ltd.
Environmental Assessment Practitioner (EAP): Environmental Compliance Consultancy (Pty) Ltd
Location: Khomas Region, Namibia

Proposed Activity: The proposed Jindal Iron Ore Project involves establishing an iron ore mining operation, comprising several open pits to be excavated using conventional blasting and drilling techniques. Ore and waste rock will be excavated and hauled by a fleet of mobile equipment, with waste rock being transported to a waste rock dump (WRD) site. The extracted ore will undergo crushing and public mining at the beneficiation plant, followed by magnetic separation and subsequent reverse flotation and concentrate filtration during the final processing stages. The resulting product iron ore fines will then be transported to Walvis Bay by road or rail for shipment.

Project Location: The proposed project area is situated 50km east of Windhoek, Khomas Region (S21°05'56S, 17°56'07E). The project area is bordered by the C22 main road.

Environmental Compliance Consultancy Pty Ltd
Address: P O Box 9195, Klein Windhoek
E-mail: info@eccenvironmental.com
Website: http://www.eccenvironmental.com

Registration Number: 2022/0595
Tel: +264 01 659 4708
Project: ECC-104-464-ADT-05-0

TE KOOP

SKOON ROLLE WIT KOERANTPAPIER VIR VELE GEBRUIKE

•PANEELKLOPPERS
•NYWERHEDE
•RESTAURANTE •SKOLE
•VERPAKKINGSMATERIAAL per kg

Prys op aanvraag
SKAKEL AGNES: 330 500 F
CHANTEL: 330 502
2 - 4 EIDERSTRAAT,
LAFRENZ INDUSTRIEEL

Namibian Stock Exchange Notice of Annual General Meeting

Notice is hereby given that the 32nd Annual General Meeting of the members of the Namibian Stock Exchange will be held on 30 April 2024 at 10:00 AM.

The meeting will be held virtually and/or at the NSX Boardroom
No. 4 Robert Mugabe Avenue
Parking & access off Dr. Theo-Ben Gurik Street, Windhoek, Namibia

Registration Deadline:
Tuesday, 16 April 2024

Members must register to attend the AGM by emailing meetings@nsx.com.na and confirming the below details:
(a) name of member; and
(b) member representative

by no later than 16 April 2024

Annual Financial Statements will be available by 23 April 2024 at www.nsx.com.na

Tiaan Bazuin
CEO
Namibian Stock Exchange

Market Watch WEDNESDAY 10 APRIL 2024

Economic Indicators

Indicator	Unit	Current	Previous	Forecast	Unit	Current	Previous	Forecast
US\$ZAR	18.48	NAD/ZAR	0.08	US\$ZAR	18.37	18.05	18.30	18.26
EUR/ZAR	20.62	NAD/EUR	0.08	EUR/ZAR	20.47	20.30	20.44	20.44
GBP/ZAR	23.46	NAD/GBP	0.72	GBP/ZAR	24.07	23.70	23.84	23.69
NAD/USD	0.54	NAD/USD	0.21	ZAR/USD	7.88	7.93	7.97	7.94

Source: Reserve Bank of Namibia
085 785 6231
Send Finance to info@sun.com.na

Effective rate (excluding tax) for the Republic: 0476 10/04/2024 - 16:20:00

COMPANY NEWS IN BRIEF

IMBIBES NEW ZIG CURRENCY STAYS STABLE
Zimbabwe's new gold-backed currency started trading on Monday amid trading that the country's third exchange rate in a decade will have many more as it is being reported, copying best of high inflation. The Zimbabwe Gold (ZIG) was announced on Friday for the month with an initial value of 10 for 1, replacing the Dollar Time Series (DTS) which had been in use for the last about 100 years of its value this year and had been trading at 13 700 ZIG for the dollar. Bank leaders say the new currency will have a significant effect on the economy over the weekend while their customers will have to open 24 hours, and the region, compared to 2.3% in the rest of the world.

SUB-SAHARAN AFRICA COUNTRY NOT EAGER TO RENT POWER, SAYS WORLD BANK
Countries in sub-Saharan Africa are not eager to make a significant dent in poverty on the continent, the World Bank said in a report on Monday.

MOBILISERS LEADERS FROM USING TO COMMUNICATE
Algeria's central bank has banned commercial banks from using social media to communicate with the public, a move that could impact the banking system against a strengthening of the local currency, it said on Monday. The regulator said in a circular that the practice it had observed of bank employees using WhatsApp to communicate for reasons was "unethical".

MOBILISERS LEADERS FROM USING TO COMMUNICATE
The central bank on Monday said it reported South Africa's growth rate is forecast to decline to 0.2% in 2024, but that it will begin to pick up to 0.5% from 0.3% last year, which is expected to be offset by a weaker dollar and higher oil prices.

MOBILISERS LEADERS FROM USING TO COMMUNICATE
The central bank on Monday said it reported South Africa's growth rate is forecast to decline to 0.2% in 2024, but that it will begin to pick up to 0.5% from 0.3% last year, which is expected to be offset by a weaker dollar and higher oil prices.

Medscheme

CAREER OPPORTUNITY

Aligned with Africa's economic growth, Medscheme is seeking a strong professional to join its team in the region. The position is available in Windhoek, Namibia.

Senior Manager: Managed Care

Key areas of responsibility include:

- Develop and implement Managed Care strategies for the region.
- Manage and coordinate Managed Care activities across the region.
- Ensure compliance with regulatory requirements and industry standards.
- Collaborate with other departments to ensure a seamless customer experience.

Requirements:

- Minimum 10 years of experience in Managed Care, preferably in the insurance industry.
- Advanced degree in Business Administration or a related field.
- Proven track record in managing Managed Care operations in a multi-national environment.
- Strong communication and leadership skills.
- Ability to work in a fast-paced, dynamic environment.

First date of publication: 26 March 2024

OMEGA HOME OWNERS ASSOCIATION

EXPRESSON OF INTEREST

DIAMOND-02 - LABORATORY ANALYSIS FOR THE DETERMINATION OF PHYSICAL, CHEMICAL AND BIOLOGICAL IN MARINE SEDIMENTS AND SEAWATER

Registration Number: 2022/0595
Tel: +264 01 659 4708
Project: ECC-104-464-ADT-05-0

Site Notices

B6-C23 T-junction



B6-M51 T-junction



M51




C23



B6 across from
International Airport

Public Consultation Meeting

- **Background Information Document (BID):** provides I&APs with information to take part in the public participation process.
 - BID available on ECC website.
- **Public & Stakeholder Consultation Meeting:**
 - Tonight's presentation highlights information from the BID.
 - Applicant can present the project to the public.
 - I&APs can ask questions directly to applicant.



JINDAL
STEEL & POWER

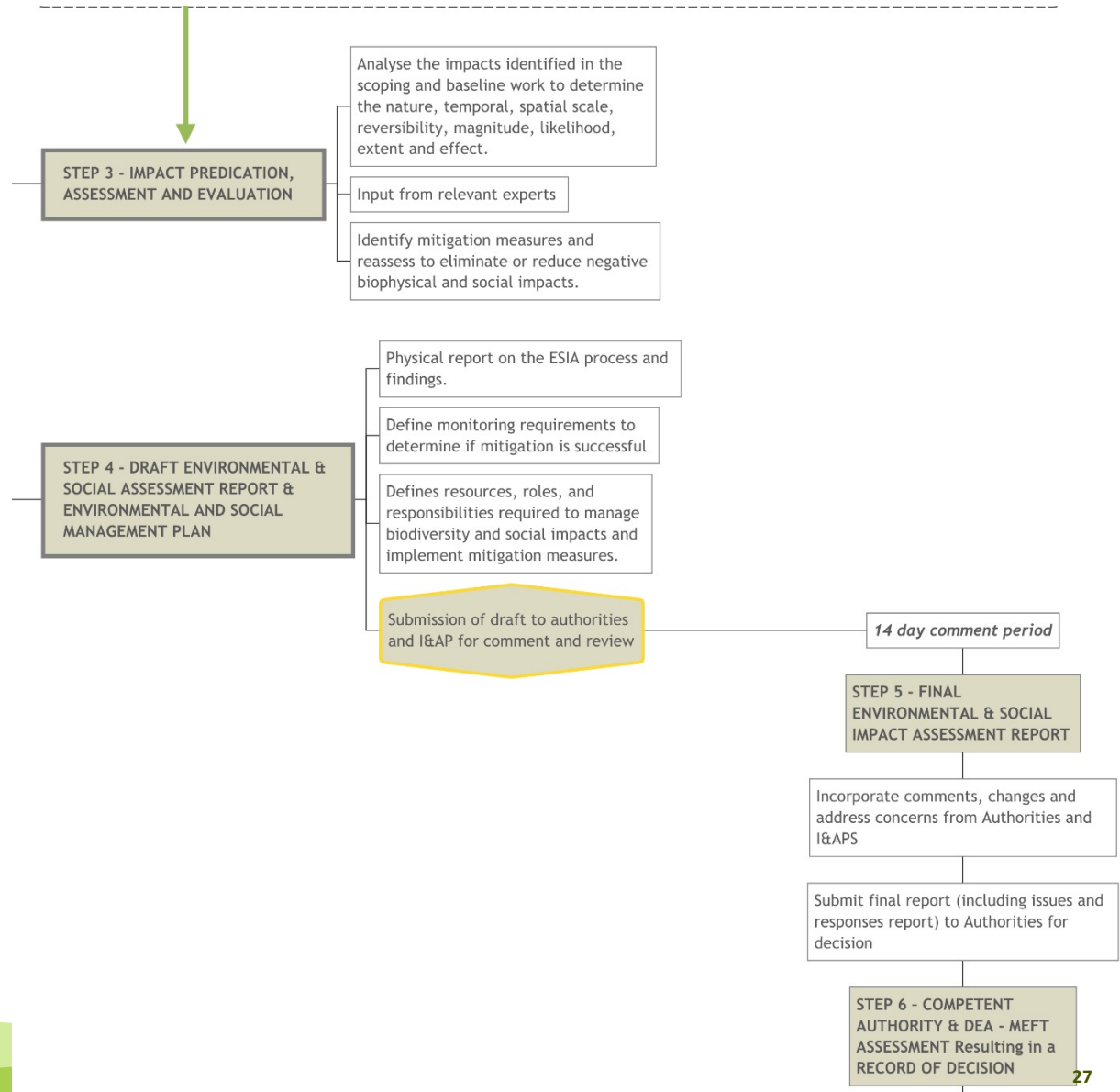
Submitted to: Jindal Steel and Power (Mauritius) Limited.
Attention: Mr Debananda Tripathy
P O Box 21490
Pionerspark
Windhoek, Namibia.

BACKGROUND INFORMATION DOCUMENT:
**JINDAL MINE PROJECT ON EPLS 4013 AND
4194, KHOMAS REGION, NAMIBIA**

PROJECT NUMBER: ECC-148-464-REP-02-D
REPORT VERSION: REV 02
DATE: 19 MARCH 2024

Assessment Phase

1. Screening: Completed
2. Scoping: Current Phase
3. **Assessment and Evaluation:**
 - **Baseline & Specialist studies**
 - **Predict & quantify impacts**
 - **Evaluate alternatives**
 - **Assign mitigation measures**
 - **Develop monitoring and rehabilitation plans**
4. **Draft the ESIA report and Environmental and Social Management Plan (ESMP)**
5. **Submit Final Report to competent authorities**
6. **Receive Record of Decision**



Baseline & Specialist Studies



BASELINE STUDIES	SPECIALIST
A baseline fauna and flora	Peter Cunningham
Detailed groundwater and surface water	ECC
A noise baseline study	ECC and/or AirShed
An air quality baseline study	AirShed
A heritage baseline study	Dr. Alma Nankela
A high-level socio-economic baseline study	ECC
Traffic and Transport study	Innovative Transport Solutions
Visual baseline study	ECC

Potential Impacts to be Assessed

Potential project impacts include (but are not limited to):

- Visual impacts
- Water resource impacts
- Noise impacts
- Air quality impacts
- Impacts to tourism
- Archaeological and cultural feature impacts
- Biodiversity Impacts
- Increased traffic & rail impacts
- Economic growth & job creation potential (permanent and temporary employment)
- Carbon emission impacts
- Safety considerations for existing infrastructure and residents



Integration of Stakeholder and Specialist Input:

- Consider and incorporate input from all stakeholders and specialists.

Inclusion of Recommended Mitigations:

- Ensure that all the identified and recommended mitigations are included.

Please Remember to Register as an I&AP

How to Register?

- **Via the ECC website**, under “Projects”:

<https://eccenvironmental.com/download/the-proposed-construction-and-operation-of-the-jindal-iron-mine-khomas-region-namibia/>

- **Via telephone or WhatsApp:** +264 81 669 7608
- **Via email:** info@eccenvironmental.com
- *Or speak to us after tonight’s meeting concludes*

Jindal Africa Corporate Video



Questions / Discussion ?



Thank You For Your Time!



Contact Us:

Tel: +264 81 669 7608

info@eccenvironmental.com

