



Submitted to: Karas Lithium Resources (Pty) Ltd
Attention: Mr William Morrell
Private bag 12012
Ausspannplatz
Windhoek, Namibia

I&AP PUBLIC CONSULTATION DOCUMENT: I&AP COMMENTS AND RESPONSES FOR THE EXPLORATION ACTIVITIES ON EPL 7574 FOR THE KARAS LITHIUM PROJECT, // KHARAS REGION, NAMIBIA

PROJECT NUMBER: ECC-139-449-REP-14-D

REPORT VERSION: REV 01

DATE: 31 JULY 2023



TITLE AND APPROVAL PAGE

Project Name: I&AP Comments and Responses for the Exploration Activities on
EPL 7574 for the Karas Lithium Project, // Kharas Region,
Namibia

Client Company Name: Karas Lithium Resources (Pty) Ltd

Client Representatives: Mr William Morrell

Ministry Reference: APP-0010357

Authors: Environmental Compliance Consultancy (Pty) Ltd

Status of Report: Final for public review

Project Number: ECC-139-449-REP-14-D

Date of issue: 31 July 2023

Review Period 31 July 2023 – 6 August 2023

ENVIRONMENTAL COMPLIANCE CONSULTANCY CONTACT DETAILS:

We welcome any enquiries regarding this document and its content. Please contact:



Environmental Compliance Consultancy
PO Box 91193, Klein Windhoek, Namibia
Tel: +264 81 669 7608
Email: info@eccenvironmental.com

DISCLAIMER

The report has been prepared by Environmental Compliance Consultancy Pty Ltd (ECC) (Reg. No. 2022/0593) on behalf of the Proponent. Authored by ECC employees with no material interest in the report's outcome, ECC maintains independence from the Proponent and has no financial interest in the Project apart from fair remuneration for professional fees. Payment of fees is not contingent on the report's results or any government decision. ECC members or employees are not, and do not intend to be, employed by the Proponent, nor do they hold any shareholding in the Project. Personal views expressed by the writer may not reflect ECC or its client's views. The environmental report's information is based on the best available data and professional judgment at the time of writing. However, please note that environmental conditions can change rapidly, and the accuracy, completeness, or currency of the information cannot be guaranteed.

TABLE OF CONTENTS

1	Summary of public meetings and comments from I&APs.....	5
1.1	Introduction	5
1.2	Public Meetings Summary	5
1.3	Key feedback on issues of concern – public meetings	6
2	Acknowledgements.....	8
2.1	Detailed comments and responses from the public meetings	8

LIST OF TABLES

Table 1 - Comments and feedback from the virtual meeting with the landowners over which the EPL falls.....	9
--	---

ABBREVIATIONS

Abbreviation	Description
CSI	community sustainable investment
EAP	environmental assessment practitioner
ECC	Environmental Compliance Consultancy
e.g.	example
EIA	environmental impact assessment
EMP	environmental management plan
EPL	exclusive prospecting licence
ESIA	environmental and social impact assessment
GPS	Global Positioning System
I&APs	interested and affected parties
L	Litre
Ltd.	Limited
m	metre
m/day	metres per day
MEFT	Ministry of Environment, Forestry and Tourism
MME	Ministry of Mines and Energy
NBRI	National Botanical Research Institute
ORKCA	Orange River-Karoo Conservation Area
Pty	proprietary
RoD	record of decision

1 SUMMARY OF PUBLIC MEETINGS AND COMMENTS FROM I&APS

1.1 INTRODUCTION

Environmental Compliance Consultancy (ECC) has been engaged by Karas Lithium Resources (Pty) Ltd, the Proponent, to conduct an Environmental and Social Impact Assessment (ESIA) in accordance with the Environmental Management Act, No. 7 of 2007 and its regulations of 2012, for which an application for an environmental clearance certificate will be submitted for the exploration activities on EPL 7574 for the Karas Lithium Project, //Kharas Region, Namibia.

The proposed project (referred to as “the Project” herein) involves the exploration lithium oxide on EPL 7574. The EPL overlaps farms Pelladrift, Oranjevalle, Kambreek and Pelgrimrust and can be accessed via the B3 to Karasburg and then the C10.

The community directly affected and/ or interested parties, were identified and invited to attend the focus group meeting. A summary of the feedback received from the public will be issued to registered I&APs and competent authorities being the Ministry of Mine and Energy (MME), and the Ministry of Environment, Forestry and Tourism (MEFT) to accompany the application for an environmental clearance certificate, for a record of decision (RoD).

1.2 PUBLIC MEETINGS SUMMARY

The stakeholder meeting was facilitated by Monique Jarrett, Environmental Assessment Practitioner – Environmental Compliance Consultancy (ECC) with technical support from Carlene Baufeldt (ECC) and Mr William Morrell – Director of Karas Lithium Resources.

The welcoming and agenda of the meeting included an introduction to ECC as an independent environmental consulting company commissioned by Karas Lithium Resources (Pty) Ltd as the environmental assessment practitioner (EAP) to conduct the ESIA.

Mr Morrell gave the technical presentation for Karas Lithium Resources and provided an overview of the proposed operations on EPL 7574 on the Project’s location, baseline and ESIA process, and procedures were presented and an explanation of the Project’s current status. The objective of the public meeting was to engage stakeholders and to identify and address any concerns they had with the proposed Project.

Mr Morrell provided insight into the company's background and their goals and strategies for the Karas Lithium project in Namibia. Mr Morrell highlighted the importance and value of the Project relating to the environment and the economy.

To conclude the presentation the main components of the environmental assessment were further discussed. This included aspects and concerns about the impacts of exploration activity on biophysical, how mitigation and monitoring measures could potentially be enforced and how the attendees as registered I&APs could contribute to the process and development of the EMP. The floor was then opened for questions, comments, and further discussion.

1.3 KEY FEEDBACK ON ISSUES OF CONCERN – PUBLIC MEETINGS

The summary of comments received from the public meetings held presented useful and valuable input in setting out the scope for the environmental and social impact assessment through questions asked and points raised. From an overall review of the recorded statements, the key common themes of concern that were raised can be summarised in the following categories:

- **Water usage**

Questions were raised on where water would be obtained from during the exploration activities. There were concerns of how much water would be required and if water will be used during the drilling phase as water is already scarce in the area and distance to water that is safe for human consumption is quite far. The proponent assured the I&APs that they would bring water to site in tanks. The Proponent specified that they would use water for lubrication during the drilling process and use approximately 1500-1800 L of water per day.

- **Endemic/sensitive flora assessment**

A concern was raised on succulent plant species and possible sensitive and/or endemic species, as the area has a high flora biodiversity. There was a request for a full plant assessment as the area's biodiversity is not well researched and a desktop study may not be sufficient. Cross-border smuggling of these plant species was also mentioned as the EPL is close to the border. The proponent assured the I&APs that there will be an onsite plant assessment by a specialist prior to Prospecting activities and added information supplemented by a botanist, Antje Burke, if available. Cross-border smuggling will be added to the risk register and there will be supervision onsite to minimise the potential for cross-border smuggling.

- **Heritage and archaeological assessments**

The I&APs agreed that a heritage assessment is necessary as there are some heritage sites in the area and wanted more information on what the heritage and archaeological assessment entails and the area that will be covered. The environmental assessment practitioner (EAP) explained that there would be a desktop study to check the national heritage database for recorded sites and plan the archaeological assessment according to their findings, the aim however, is to cover as much of the EPL as possible with evidence provided (GPS tracking). The heritage assessment would be carried out by a heritage specialist followed by a verification study from the Heritage Council.

- **Poaching**

The issue of poaching was discussed and possible prevention methods during the exploration phase as the EPL is within a conservation area. The EAP explained that poaching is included in the environmental management plan (EMP), and the proponent will be held liable should any of the team members be involved in poaching activities.

– **Transportation of Equipment & road construction**

There were questions regarding the transportation of equipment that will be used during the exploration activities and concerns over road destruction or the construction of new roads that would have a visual impact and/or negatively impact the surrounding environment. The proponent explained that multiple alternatives would be considered including aerial ropeways in order to reduce the footprint impacts.

– **Compensation during the exploration phase and possible mining activities**

The I&APs had concerns that they may be faced with more negative impacts during the first phases of the exploration activities and requested more information regarding fair compensation. It was discussed in the land access agreement between the client and farm owners, there will be compensation discussions and negotiations including possible payment for services and any damage caused. The aim of Karas Lithium is to work collaboratively with farmers and stakeholders.

– **Timeline of processes and update of current/upcoming events**

Questions were raised regarding the timeline of explorations and how long I&APs can review the environmental assessment documents. The proponent gave a summary of the project and what it entails along with the duration of certain activities during the exploration phase. There was an agreement to allow I&APs a 14-day period to review the relevant documents.

– **Supervision of operations**

Concerns were expressed over the exploration team, supervision during activities and who would be in charge should issues come up. It was explained that Dr. Johan Hattingh, the exploration manager, would have a team of no more than 10 people for initial stages and 10 people per drill rig at later stages. All questions and concerns will be directed to him during the exploration phase.

2 ACKNOWLEDGEMENTS

In closing of the meeting, ECC thanked all I&APs for their attendance and for providing valuable feedback during the stakeholder meeting. Through the stakeholder meeting process, the Proponent and ECC have endeavoured to provide a platform to hear and address all relevant comments put forward by I&APs.

ECC further endorsed the fact that constructive feedback from I&APs results in a more robust and improved ESIA. This process results in a project that is understood by the community and I&APs. The I&APs feedback will contribute to identifying the potential impacts to be assessed and concerns to be considered and addressed as the project progresses.

2.1 DETAILED COMMENTS AND RESPONSES FROM THE PUBLIC MEETINGS

The official public consultation period began on the 20th of April 2023 and remained open until the 5th of May 2023 for initial comments. Additional comments were received during the stakeholder meeting, via email and telephone which are included in the draft scoping report and this document in Table 1 below.

Further comments were welcome after the initial registration period and public review period and the public consultation period will remain open for I&APs until the final assessment report for the project is ready for submission to the competent authorities.

Table 1 - Comments and feedback from the virtual meeting with the landowners over which the EPL falls.

Wednesday, 31 May 2023			
Virtual (Zoom) Meeting			
Name	Stakeholder Details	Comment/Question Received	Response/Clarification
Jannie van de Merwe & Ed Barthorp	ORKCA	Boreholes available on Pelladrift are not safe for human consumption and therefore provision should be made for water for assessment specialists and during the exploration activities, e.g groundwater studies, yet the groundwater may be poor.	Comment Noted.
		Specialist studies will be needed for flora biodiversity. as there are highly sensitive and/ or endemic plant species in the area that are not well researched. Cross-border smuggling has been an issue.	A copy of a study from a botanist, Antje Burke was received, who has identified sensitive succulent species in the area, which will be taken into consideration. Cross-border smuggling will be added to the risk register to manage contactors and there will be supervision onsite to prevent cross-border smuggling.
		There are heritage sites in the area, so we are in agreement with a heritage assessment. What would the archaeological studies entail in terms of the large, mountainous area.	A desktop study to check the national heritage database for recorded sites will be done and the archaeological assessment will be planned according to their findings, but the aim is to cover as much of the EPL as possible with evidence provided. The heritage assessment would be carried out by a heritage specialist followed by a verification study from the Heritage Council.
		How can you ensure that poaching will not occur? We are in a conservation area, how will that be prevented?	Poaching is included in the EMP, and the proponent will be held liable should any of the team members or contractors be involved in poaching activities.

Wednesday, 31 May 2023			
Virtual (Zoom) Meeting			
Name	Stakeholder Details	Comment/Question Received	Response/Clarification
Pete Morkel	Farm Pelgrimrust	Elaborate on the drilling phase during the exploration activities.	The impact or disturbance will be minimal during the channel sampling. The drilling technique would be determined. Ore samples will be collected, processed and taken to the lab for chemical and metallurgical studies. Given the terrain, a light-weight diamond drill rig may be used.
		What transportation will be used for equipment; how will it impact road?	The drill rig can be carried to the site, as we have done before. Building a road is extremely expensive and may be destructive to the environment. Another route is pieces of the drill being carried by donkeys.
		Who oversees putting the finer details of the exploration activities in a document? Will we have an input before operations? We want to be sure that if we are not happy with what is proposed we can put a stop to the activities.	These details are normally listed in the EMP. The methodologies in the EMP can specify the preferred and appropriate activities. Impacts will be listed and the ECC team will identify mitigations as well as rehabilitation strategies. The EMP is a public document, and all reasonable input would be appreciated.
		We are living with the day-to-day negative impacts from the explorations along with time and effort in assisting assessment studies. Who covers the negativity that comes with activities? Is there fair compensation? How early can positive compensation occur?	In the land access agreement between the client and farm owners, there will be compensation discussions and negotiations. Rehabilitation will be included in the EMP and is legally binding. There is payment for hardship or inconvenience and Karas Lithium would like to work collaboratively with farmers and stakeholders.

Wednesday, 31 May 2023			
Virtual (Zoom) Meeting			
Name	Stakeholder Details	Comment/Question Received	Response/Clarification
			In the case where farmers can provide Karas Lithium with necessary resources, such as farm help and access to camp sites fair compensation will be provided. Karas Lithium want to be collaborative.
		What is the timeline of processes after approval and when will the actual activities occur? The number of people? When is the EIA going to happen? What is expected from us?	Pending is the Heritage assessment: This depends on when ECC can get the specialist onsite and how long the assessment and report may take. It takes a month to complete an impact report which will be submitted for your review for a week and after your comments and changes are incorporated, it will be submitted to the government for their review. It takes 3 - 6 months for approval.
		For the plant assessment will you only use the information given by Antje or will there be a more detailed study?	ECC would use the information from our desktop data, the study by Antje Burke and use additional information from the National Botanical and research institute (NBRI).
		After approval from MEFT, elaborate on activities.	The first phase will be exploration of the riverbed which would take up to a week. The second phase will be channel sampling when pegmatite of interest has been identified.
		How much water do you need? Are you going to bring it in by tanker? Do you need water for the drilling process? How long is the drilling rate?	Circumstances will dictate, however Karas Lithium will most probably bring a trailer and tractor to import water. We (Karas Lithium) will use 1500-1800 L of water per day. We do circulate most of the water. We (Karas Lithium) do use water in drilling for lubrication. The drilling rate is 10 m/day.

Wednesday, 31 May 2023			
Virtual (Zoom) Meeting			
Name	Stakeholder Details	Comment/Question Received	Response/Clarification
			6 months may be a good guess. After these technical studies will be done within 6 months followed by an ESIA process that could also take a few months
		Is the EAP paid by the proponent?	ECC is hired by Karas Lithium to undertake an ESIA, however it is an independent assessment. ECC has no specific interest in the success or failure of the project. As per the regulations of the environmental management act, any proponent is required to appoint an independent EAP to conduct the necessary studies.
		Can you possibly hire someone to do a full plant assessment as the succulents are of great concern.	Karas Lithium will commission a botanist to conduct a full biodiversity study should the Project progress to that stage.
Ed Barthorp	ORKCA	Why are mining activities not taken into account now? The whole point of exploration now is to do mining later.	We (Karas Lithium) don't know if there is potential mining after exploration activities. If mining is possible, proper steps will be taken regarding the EMP. It is our responsibility to ensure that impacts are mitigated and rehabilitated. We currently have an EPL allowing us to do exploration activities and we want to pursue that right in a responsible manner. We do not want a reputation of being a destructive mining company. There are international standards that define how to manage and mitigate impacts. We must act accordingly. We compensate any discomfort.

Wednesday, 31 May 2023			
Virtual (Zoom) Meeting			
Name	Stakeholder Details	Comment/Question Received	Response/Clarification
		Is there a budget provided in the EMP and a guarantee that the budget can be met?	No finances are discussed in any of the ESIA documents. Budget will be involved in the compliance to the EMP. The management plan sets the rules and Karas Lithium must comply with those rules.
		<p>Can we be provided with a spider diagram with the different people involved in the activities and their responsibilities including the stakeholders?</p> <p>Can a document be provided of all the current activities that are requested, with dates and descriptions.</p> <p>We require a 14-day period to review the scoping report.</p> <p>There are many emails which can also be confusing with short notices to requests. There are many new threads of emails. From now on, Jannie will be the sole point of contact from ORKCA with Ed and Andreia copied in.</p> <p>We would like to request that the archaeological specialist carry a GPS tracker during the assessment to prove that they covered the entire area.</p> <p>We would like to request an updated plant study as the area has a high biodiversity and is not</p>	<p>A 14-day review period is possible, provided that the proponent agrees.</p> <p>Just a note, ECC will submit the Heritage assessment on behalf of the specialist and the proponent for heritage consent to the heritage council, but the heritage council will use one of their own specialists to verify the findings of the independent heritage specialist.</p> <p>Possibly what the Proponent can do prior to drilling activity is to hire a botanist to assist with a site assessment and possibly relocate sensitive species if possible.</p>

Wednesday, 31 May 2023			
Virtual (Zoom) Meeting			
Name	Stakeholder Details	Comment/Question Received	Response/Clarification
		researched well. There is a high chance of encountering endemic succulents.	
		In the case of a successful exploration, do you tend to establish an environmental, social investment fund as part of your business model? And what percentage of your annual turnover is it normally? Has the trustees been established?	<p>Yes, it is part of the requirement of the community sustainable investment (CSI), to commit a portion of the turnover to CSI. That should cover both environmental and social impacts.</p> <p>At this point the Proponent is not sure if it will be a cash rich operation, what often happens is a is set up community trust to address the social aspect, as for the environmental impacts we need to look at offset, nurseries and how the Proponent can identify target specific projects where we can add benefits. This has been discussed with the Proponent.</p> <p>In response to the trustees: There will be a representation from the community and the company and an independent representation.</p>
		How and where will roads be built to access the mine, should mining activities go forward? We don't want roads to scar the landscape of the area, is it possible for it to be hidden as much as possible?	It will be part of the land access agreement. Existing roads and tracks will be used as much as possible. Any new roads maximise post-exploration land use opportunities but will be kept to a minimum. Stakeholders will be consulted beforehand about the design and location of the roads.

Wednesday, 31 May 2023			
Virtual (Zoom) Meeting			
Name	Stakeholder Details	Comment/Question Received	Response/Clarification
			Design will minimise footprint impacts as far as practically possible.
Pete Morkel	Farm Pelgrimrust	Who will supervise the operations? Who do I go to if I have issues?	The geological consultant's (Dr Hattingh) company will provide supervision of the drilling contractors. Regarding issues, you can report to Johan Hattingh.
		During mining operations, would you be pumping water from the groundwater from the orange river? We just want to make sure when moving from exploration to mining things won't get lost and everything will be properly addressed.	The Proponent may have to look at where they can position the treatment plant and that will have various factors that impact on its accessibility, the cost of getting water to plants, many of these aspects need to be considered. In the exploration phase they capture any lessons learned. If Karas Lithium do move forward with mining, a completely new environmental assessment and environmental management plan will be drafted to assess specific impacts.

APPENDIX B - STAKEHOLDER LETTERS

Environmental Compliance Consultancy (Pty) Ltd
PO Box 91103 Klein Windhoek Namibia
info@eccenvironmental.com
www.eccenvironmental.com
+264 81 669 7608



ECC-139-449-LET-13-A

22 May 2023

Identified Stakeholders and potentially interested or affected parties

Dear Stakeholders,

RE - NOTIFICATION OF ENVIRONMENTAL ASSESSMENT FOR THE PROPOSED KARAS LITHIUM PROJECT FOR LITHIUM EXPLORATION ACTIVITIES WITHIN EPL 7574, //KARAS REGION, NAMIBIA.

Environmental Compliance Consultancy (ECC) has been engaged by Karas Lithium Resources (Pty) Ltd, the Proponent, as their environmental assessment practitioner to conduct the environmental clearance certificate application in terms of the Environmental Management Act, No. 7 of 2007 for the proposed lithium exploration activities within EPL 7574.

The proposed Project is in the Karasburg district, south of Karasburg near the Orange River. The Proponent proposes to explore for lithium by identifying the potentially mineralised areas using various exploration techniques, such as sediment sampling, geophysical surveys, geological mapping and drilling.

This letter is intended to engage potentially interested and affected parties (I&APs) for the Project and to provide a communication channel to ECC while the environmental and social impact assessment (ESIA) is in process.

Public participation is an important part of the ESIA process, as it allows the I&APs to obtain information about the proposed project and provide feedback to the assessment practitioners.

For this reason, ECC would like to have a focused meeting with you and the neighbouring farms over which the EPL falls to discuss any concerns and answer questions you may have.

Date: 31 May 2023

Time: 17:00

Venue: Warmbad Public Library

Should you require further information about the project or wish to register as an I&AP to receive ongoing

Date: 31 May 2023

Time: 17:00

Venue: Warmbad Public Library

Should you require further information about the project or wish to register as an I&AP to receive ongoing updates about the Project please feel free to download the BID and register using the link below:

<https://eccenvironmental.com/download/the-proposed-exploration-of-industrial-minerals-on-epl-7574-kharas-region-namibia/>

Or if you are unable to complete the registration form online, please contact us via email for assistance at info@eccenvironmental.com.

Additionally, as the exclusive prospecting licence incorporates portions of your farm, our team along with the proponent would kindly like to request access to your farm to conduct a site visit on the 31st of May 2023 – 1st

Environmental Compliance Consultancy (Pty) Ltd | Registration Number: 2022/0593

1

+264 81669 7608
info@eccenvironmental.com
www.eccenvironmental.com
PO BOX 91193
Klein Windhoek
Namibia



of June 2023 and would require vehicle access. This visit would consist of simply walking around to evaluate any sensitive areas, flora, fauna, or heritage sites that should be considered during the impact assessment.

ECC values community input and participation in our projects and we look forward to working with you through the assessment process.

Should you have any questions or require additional information please do not hesitate to contact our office, and a team member will assist you.

Yours sincerely,



Stephan Bezuidenhout
stephan@eccenvironmental.com



Jessica Bezuidenhout Mooney
jessica@eccenvironmental.com

APPENDIX C - SITE NOTICES



GPS Coordinates:

Lat: -28.74540901

Long: 19.1149883



GPS Coordinates:
Lat: -28.813772201
Long: 19.09729576

APPENDIX D – BID

APPENDIX E – VIRTUAL FOCUS MEETING INVITATION



Monique Jarrett <monique@eccenvironmental.com>

139-449: Request for access to farm from 31st of May to 1st of June

1 message

Monique Jarrett <monique@eccenvironmental.com>

26 May 2023 at 15:18

To: Anke Stegmann <anke.stegmann@me.com>, andreia pawel <andreia@orkca.org>, Ed Barthorp <ed@orkca.org>, Johannes Van De Merwe <jannie@orkca.org>, petemorkel@gmail.com, peter.koep@gmail.com

Cc: Kelly Ochs <kelly@eccenvironmental.com>, AllRound Namibia <logistics@iway.na>, "William Morrell (OTR)" <william@optiterrae.com>, Jessica Bezuidenhout <jessica@eccenvironmental.com>, Stephan Bezuidenhout <stephan@eccenvironmental.com>, James Lumley <jlumley1967@icloud.com>, hattingh@creo.co.za

Dear Mr Morkel, Ms Stegmann and Mr Koep,

ECC is a team of experienced environmental consultants who value the protection of biodiversity and livelihoods above all else. With that said we are an environmental consulting firm and do not partake in mining or exploration activities, we are only involved in the environmental and social impact assessment and monitoring thereof.

Our site visits that are conducted during scoping and environmental impact assessments are solely to assess any sensitive habitats or protected species which may occur on site, along with the desktop studies we conduct to establish a baseline of the biophysical and social environment. We then continue to base our assessments against that established baseline. These visits do not require us to analyze the entire site and would not require more than a day.

Should we require a more in-depth study to be conducted such as the heritage assessment that needs to be conducted, we commission specialists to conduct these studies. Should accommodation, a guide etc be needed along with that specialist's scope of work, that will be thoroughly discussed and arranged with you in advance.

Nonetheless, we understand your concerns and are more than willing to provide any documentation you may require before any site visits may be arranged.

However, due to the fact that there has been very little response from the I&APs for a focused group meeting, we would like to recommend a virtual meeting instead to discuss the Project with you both and any other interested parties that may be interested to join. I will send out an invite on Monday.

Additionally, we will need to conduct a heritage assessment but I will contact you both individually throughout the course of this week to arrange that.

Should you have any further questions or concerns please do not hesitate to contact us.

Kind regards,

Monique Jarrett

Environmental Compliance Consultancy (ECC)

Position: Environmental Practitioner

Office Tel: +264 81 669 7608

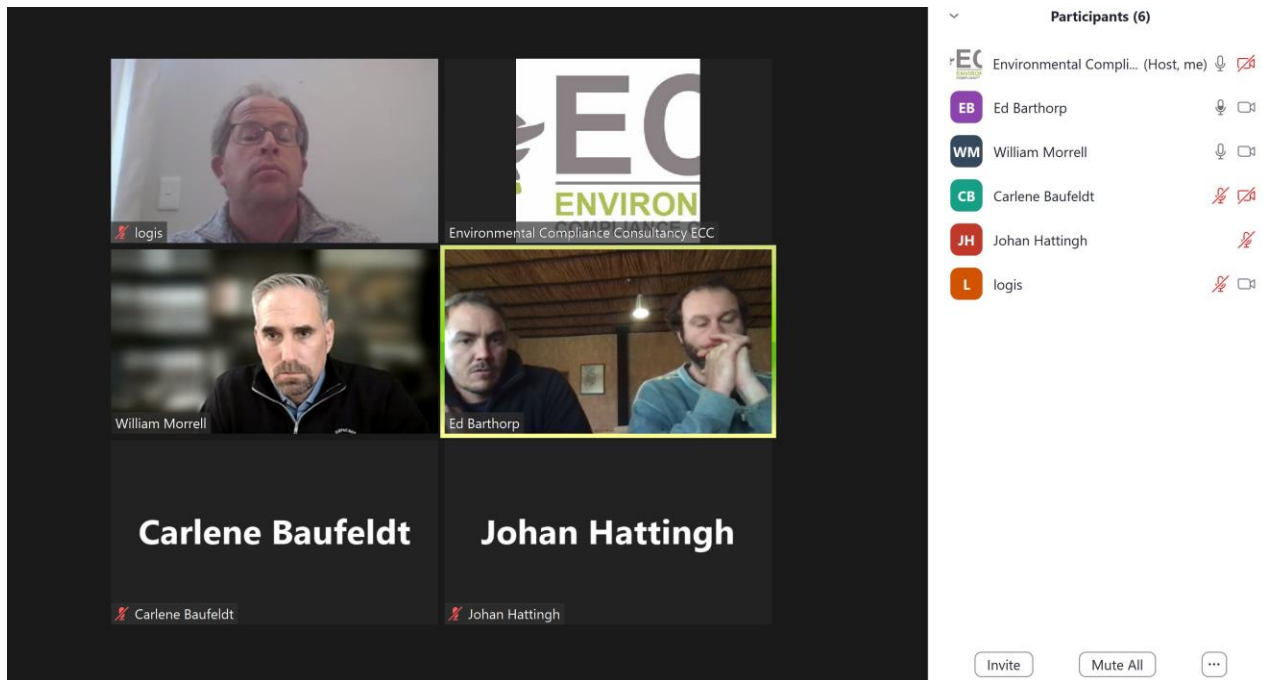
Postal: PO BOX 91193 | Klein Windhoek | Namibia

Address: 1 Jan Jonker St | Wasserberg Park | Klein Windhoek | Namibia

Email: monique@eccenvironmental.com

Website: www.eccenvironmental.com

APPENDIX F – ATTENDACE REGISTERS



Name	Organisation/farm they represent
William Morrell	Director of Karas Lithium Resources (Pty)
Dr Johan Hatting	Senior Geologist for Karas Lithium Resources (Pty)
Jaco van Vuuren	Logistics manager for Karas Lithium Resources (Pty)
Pete Morkel	Owner of Farms Kambreek and Pelgrimrust
Anke Stegmann	Owner of Farm Oranjevalle
Ed Barthop	Representative of ORKCA
Johannes van de Merwe	Representative of ORKCA
Monique Jarrett	ECC
Carlene Baufeldt	ECC
Kelly Ochs	ECC

Name	Organisation/farm they represent
Veto Islasia Katjivena	ECC

APPENDIX G – STAKEHOLDER MEETING PRESENTATION



Welcome

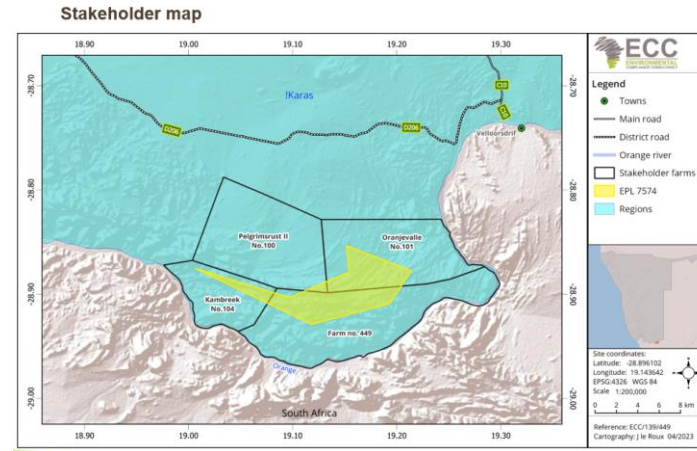
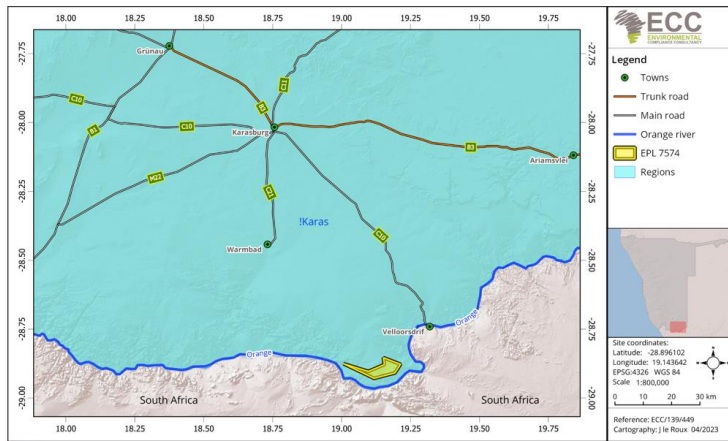


AGENDA

- Background Information
- Karas Lithium Presentation – *Presented by William Morrell*
- Public Participation
- Environmental & Social Impact Assessment (ESIA) – *Presented by ECC*
- Questions and answers

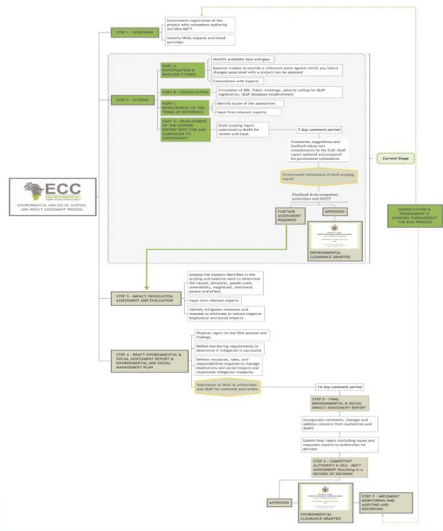
Main Objectives of the ESIA

- ✓ Provide information describing the planned Karas Lithium EPL 7574 and associated activities;
- ✓ Provide an independent environmental and social impact assessment of the activities associated with the proposed exploration project; and
- ✓ Describe management and mitigation measures associated with any identified potential impacts where necessary.



ESIA Process

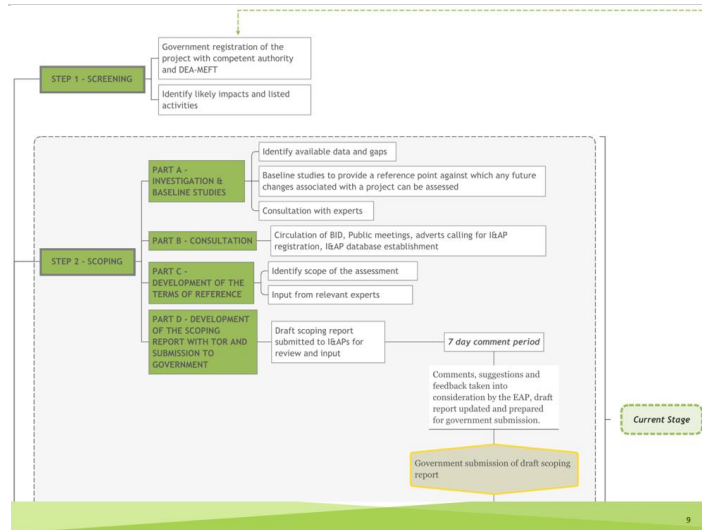
- Screening - APP-0001259 (DEA PORTAL)
- Scoping and Assessment – Current Phase
 - Public Participation



ESIA Process

- Screening – APP-0001259 (DEA PORTAL)

ACTIVITIES THAT TRIGGERED A CLEARANCE CERTIFICATE APPLICATION
WASTE MANAGEMENT, TREATMENT, HANDLING AND DISPOSAL ACTIVITIES
MINING AND QUARRYING ACTIVITIES
FORESTRY ACTIVITIES
WATER RESOURCE DEVELOPMENT
HAZARDOUS SUBSTANCE TREATMENT, HANDLING AND STORAGE



Company Highlights

Diversified African Lithium Assets in Namibia and Madagascar

- ✓ Securing multiple exploration and mining licenses in both areas offering stability and a broad range of opportunities at various stages of development for lithium extraction.
- ✓ Positioned in regions demonstrated to be rich in lithium resources, ensuring access to high-grade lithium deposits for long-term profitability.
- ✓ Committed to environmental and socially responsible practices, prioritizing natural resources and fostering positive relationships with local communities.
- ✓ Advanced Exploration: Utilizing advanced remote sensing technology and innovative techniques to optimize lithium identification, maximizing resource potential.
- ✓ Efficient extraction and enrichment: access to energy efficient beneficiation technology to reduce operating costs and reduced environmental impact.

World-Class Capability in Mineral Resource Project Design, Development, and Operations

- ✓ **Resource Assessment:** Leveraging advanced geospatial technology to identify and evaluate high-grade lithium resources in Namibia and Madagascar.
- ✓ **Project Development & Management:** Streamlining the lithium extraction process through efficient project planning, execution, and management.
- ✓ **Market Analysis & Strategy:** Assessing global lithium market trends to make informed decisions and position the company for long-term growth.
- ✓ **Environmental and Social Stewardship:** Implementing sustainable mining and beneficiation practices to minimize ecological impact and protect local ecosystems while providing meaningful employment and development opportunities for local communities.

Veteran Mining Management Team with a Proven Record of Operational Excellence

- ✓ Team of industry experts with a proven track record in lithium exploration and mine development in Africa, ensuring successful execution of projects, including experience in leading over US \$ 4 billion worth of projects over 20 years.
- ✓ Collaborating with strategic partners, including financial institutions, government entities and industry leaders, to secure access to crucial resources and drive growth.



Company Overview

Continental Lithium Africa is a mineral resource development company providing practical and value-driven strategies for project identification, design, development, and operations, targeting the massive untapped African lithium and battery metals resources opportunity.

The company has built a team of experienced miners and project developers, leveraging advanced technologies and proven methodologies, to navigate the complex mining industry value chain. The company is committed to sustainable mining practices and strong community engagement, ensuring environmentally responsible operations.

The company is developing a portfolio of lithium properties in Namibia and Madagascar. With significant progress made in remote sensing, mapping, and site assessments, the company has identified and secured promising prospects and provided guidance on the next steps for exploration and development. Experience in efficiently developing greenfield projects will maximize value for shareholders and partners.

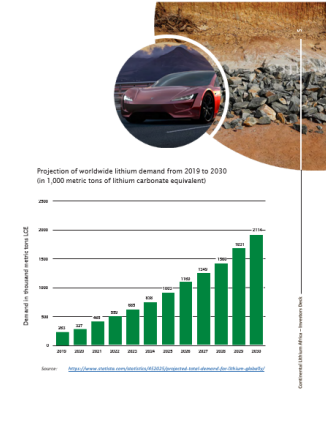


Our vision is to become the leading African-focused miner in sustainable lithium production, leveraging the continent's vast resources to power the clean energy revolution.

EV Battery Market is Driving Lithium Demand

- The global demand for lithium is expected to surpass 2 million metric tons of lithium carbonate equivalent
- by 2030, more than doubling the demand forecast for 2025. In the next decade, increases in battery demand
- for electric vehicles (EVs) will be a major driver for lithium consumption.

The EU and increasingly more US states aim to ban petrol/diesel car sales by 2035, prompting car makers like GM, Ford, Tesla, and Volvo to invest in mining companies for lithium, which is in short supply.



"White Gold" Lithium Supply Shortage

The supply of lithium is expected to face chronic shortages by 2030, even with the addition of new mining and recycling projects. This is due to a projected fall in the amount of lithium extracted from deposits around the world and the heavy concentration of refining capacity in only a few countries. Increasing production is challenging due to environmental hazards and the vast amounts of water required for conventional extraction methods. New technologies hold promise for reducing the environmental impact, but the challenge is to deploy them at scale.

Continental Lithium Africa has identified energy and resource efficient concentration and extraction technologies, significantly reducing the impact of lithium production.

A Lithium Supply Shortage is Expected by 2030
 Forecasted global lithium supply and demand (in million tons LCE)

Year	Supply (million tons LCE)	Demand (million tons LCE)
2020	0.4	0.4
2021	0.5	0.5
2022	0.6	0.6
2023	0.8	0.8
2024	1.0	1.0
2025	1.2	1.2
2026	1.4	1.4
2027	1.6	1.6
2028	1.8	1.8
2029	2.0	2.0
2030	2.2	2.2

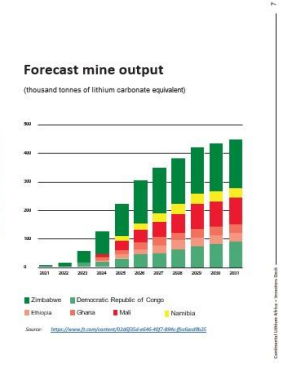
Africa's Lithium Boom: MASSIVE UNTAPPED RESOURCES

Africa is emerging as a leading lithium supplier over other countries, and forecasted to supply a fifth of the world's lithium by 2030, according to commodity trading giant Trafigura.

China, the leader in global lithium, is investing heavily into Africa. After Zimbabwe, Namibia is the next country in Chinese investors' sights.

- In March 2023, Huayou Cobalt made a symbolic investment in Askani, an Australian firm exploring in Erongo and Us areas of Namibia.
- Xinfeng, a Chinese exploration company active in Erongo, Namibia, has mined tens of thousands of tonnes of raw lithium ore and shipped it to China.

Madagascar has not been on the industry's radar screen due to the hiatus in license approvals and is now drawing attention with a new mining code up for approval, backed by World Bank and IMF initiatives. This shift offers our company a unique chance to leverage our Malagasy network for priority access to valuable resources.



Our Capabilities Across the Value Chain

Continental Lithium Africa has the international expertise and relationships to overcome challenges of setting up processing plants in Africa, including supply chain management.

The EU and increasingly more US states aim to ban petrol/diesel car sales by 2035, prompting car makers like GM, Ford, Tesla, and Volvo to invest in mining companies for lithium, which is in short supply.

Focused Due Diligence Comprehensive assessments including market, technology, geography, resources, environment and stakeholder considerations.	Exploration & Data Management Use of industry experts with deep pegmatite knowledge for designing, managing and analysing exploration activities ensuring robust data and modelling outputs.	Portfolio Management & Valuation Balanced project selection approach based on key drivers, including market conditions, funding, sovereign risk, partners selection, skills availability, and economic metrics for valuation.	Project Execution Strategy & Implementation Tailored solutions with optimal cost/risk balance, considering project specifics, capabilities, lenders, scope, environment, stakeholders, cost and safety, via a range of execution methods from self-perform to LSTK.
Contracting & Procurement Efficient, transparent processes with quantitative bid analysis for mitigating risk, improving bottom line and protecting reputation.	Construction Management Owner-driven, customized construction management solutions with key tools and partnerships for effective project execution.	Mine Design & Fleet Optimization Expert guidance in design, valuation, equipment selection, and metallurgical optimization for improved productivity and reduced operating costs.	

Lithium in Namibia: Karas Region

In Namibia, Continental Lithium Africa has already secured two Exclusive Prospecting Licenses in the Karas region of Southern Namibia and is negotiating ownership of a further two licenses in the same highly prospective area. Advanced spectral analysis and infrared remote sensing have identified promising pegmatite bodies across all EPLs. Sampling plans have been initiated to demonstrate the pegmatite grades. A comprehensive geological review is in progress, detailing the pegmatites and evaluating their potential for economic lithium potential.

Our current work includes: creating drainage maps for each EPL to enable stream sampling to pinpoint lithium-bearing pegmatites. We have implemented a focused stream sediment sampling program targeting tributary junctions for essential data collection and high-grade orebody identification. After identifying lithium-rich pegmatites, we will conduct channel sampling across the economically attractive pegmatites, followed by an extensive drilling program on the most promising sites, bringing us closer to realizing the full potential of our resources.

Lithium in Namibia: Cape Cross - Uis Area

Continental Lithium Africa is exploring the Cape Cross-Uis Pegmatite Belt (CUPB) area, which stretches from the coast at Cape Cross in a 24 km wide and 115 km long zone of mineralisation extending to just east of the settlement and tin mine at Uis, with significant mineralization potential.

Reconnaissance work for the CUPB is nearing completion. The region is characterized by sheath wash sediments and dune ridges, which obscure the underlying substrate. Despite competition from larger miners targeting the well-known pegmatite swarms, ample opportunities exist for further exploration and development in the area.

Prior field work experience in this region has bolstered our confidence in the area's prospectiveness. We are in negotiation with several EPL holders to contribute their properties to the CUPB portfolio of projects currently being assessed.

Lithium in Namibia: Cape Cross - Uis Area

Continental Lithium Africa has already secured 12 mining claims, which are being converted into mining licences and four EPLs in and adjacent to this mineralized zone of Cape Cross - Uis Area.

Government & Global Interests in African Resources



Amos Hochstein
"We would like to see American and European and Australian investment into African supply chains"
(Digital Press Briefing, November 9, 2022)
Joe Biden's Energy Security Envoy visited Africa and Namibia, emphasizing U.S. investment strategy in Africa's minerals, promoting competition among countries and companies.



Anthony Viljoen
"We believe this province [Erongo] will become a globally significant metallogenic province for new technology metals"
(Africa Mining, Annual Report 2021)
Andrada's CEO, anticipates global significance for Erongo. The region is lithium and other critical energy transition metals, including tin and tantalum.




Thierry Breton
"Visit on the ground in Us in Namibia of one of the potential largest lithium hardrock mine[s] in the world."
(Jan 24, 2023)
EU Internal Markets Commissioner, overseeing the bloc's strategy for critical minerals supplies, identifies Namibia's Us region as having the potential to host the world's largest lithium hard rock mines.




ESG

At Continental Lithium Africa, our dedication to Environmental, Social, and Governance (ESG) principles drives us to create shared value by prioritizing safety, environmental responsibility, and inclusivity. We strive to maximize our operation's positive impact on local communities and surpass regulatory standards to achieve the highest level of environmental performance.


Our lithium projects emphasize a reduced carbon footprint and lower greenhouse gas (GHG) emissions compared to traditional pegmatite mining, demonstrating our commitment to sustainability and eco-friendly practices. We base our social and environmental management plans on global best practices and standards.




Our Values




Transparent & Open Communication
Comprehensive assessments including market, technology, geography, resources, environment and stakeholder considerations.



Efficiency & Performance
Assistance with key personnel, progress reviews, supplier selection and data management for effective exploration programs.



Trust & Integrity
Our strong reputation is built on a solid code of conduct and business ethics that guide every aspect of our operations, ensuring we remain beyond reproach.



Safety & Security
We carefully assess risks in mining operations, including physical, political, environmental, and legal factors, to safeguard your team and investments.

Management Team and Advisors

Steve Mynott

Steve Mynott is a seasoned professional in the mining and resource sector, with a notable record of leadership within both private and public companies, holding various executive roles. He has demonstrated exceptional team management skills while successfully advancing multiple resource projects.

Over his distinguished career, Steve has adeptly raised substantial funding for diverse organizations, cementing strong relationships with a global network of investors and financial institutions across North America, Europe, and Japan. His robust communication and networking abilities have proven instrumental in driving the growth and success of the companies he has been part of, underscoring his valuable contribution to the industry.

William Morrell

William is a seasoned professional in the metals and mining industry, with a strong focus on sustainable and responsible development. He has extensive knowledge across various aspects of the sector, including exploration, project execution and operations management. With experience in 12 countries and having initiated projects worth US\$ 4.9 billion, William has gained multi-commodity expertise and demonstrated his ability to create dynamic and motivated teams for exceptional performance in the industry.

William holds a BSc in Mining Engineering, a Graduate Diploma in Mineral Economics, a Master in Mining Engineering, and an MBA with Dean's list recognition. His key industry skills include project financing, logistics management, exploration, sales and marketing, business re-engineering, government relations, and CSR management. In his career, he has also managed procurement worth US\$ 860 million and achieved a 14.88 million tons 13.5tne hours.

William founded Opio Terra Resources, an advisory firm specializing in helping asset owners develop and implement projects responsibly and efficiently. He has held leadership positions in various organizations, including CEO of International Gulf Mining and Dynamic Mining SAS, CEO of Guinea Alumina Corporation (an Emirates Global Aluminium subsidiary) and Chief Commercial Officer/Senior VP, Early-Stage Studies and Exploration at Capric Africa. William's extensive experience and skills make him a valuable asset in the global metals and mining industry.

James Lumley

James Lumley is an experienced professional in the mining and resource sectors, as well as property investment. He has held various executive positions, including Chief Executive Officer, Business Unit Head, and Project Director. He was most recently the Business Unit Head for Guinea at Terracom Resources, where he is responsible for managing and developing potential bauxite and iron ore projects.

Previously, he served as CEO at Anglo-African Minerals, successfully securing millions of dollars in funding and managing government relations in multiple countries in the property investment sector. James was the Managing Director of Iron Grids Limited, overseeing the company's rapid growth in turnover, and asset strategy. James started his career with Baring's Bank, working through to the Capital Markets in London.

He holds an MBA in Finance and business studies and has completed graduate Banking and Finance exams. James has a history of building strong working relationships with government bodies, investors, and financial institutions, and has successfully negotiated several major deals and memoranda of understanding throughout the African continent.

Expert guidance in design, valuation, equipment selection, and metallurgical optimization for improved productivity and reduced operating costs.

Management Team and Advisors

Dr. Johan Hattingh Zaire

PhD (Geology), Dr. Sci. Nat.
 Johan Hattingh Ph.D. is a distinguished geologist and Executive Chairman of Oreo Design (Pty) Ltd, a company specialising in exploration and mine management services. He earned his degree in Geology at Stellenbosch University in 1985 and completed his doctorate in Geology at Port Elizabeth University in 1996. Throughout his career, he has been involved in various research projects, including studies on the distribution of heavy minerals in natural river systems and river system evolution.

Dr. Hattingh's professional experience spans from his time at the Geological Survey of South Africa to his current role managing Oreo Design since 2000. Under his leadership, the company has transformed into a key provider of professional services to the mining industry, such as geological, mine engineering, and metallurgical services, as well as mine planning, risk analysis, exploration planning, management and equipment design and installation.

A registered member of the South African Council for Natural Scientific Professions (SACNASP), Hattingh is fluent in both Afrikaans and English. He has authored 12 articles in international scientific journals and contributed to two books published by Wiley & Sons, London, and Grahamstown University Press. His expertise in large identification and project feasibility evaluation has made him a leading figure within the mining industry. He has acted as the Qualified Person for several projects in the region, including lithium and uranium resources.

Dr. Daniel Zaire

Dr. Daniel Zaire is a seasoned Electrical Engineer with expertise in areas such as Engineering Economics, Statistics, Reliability, Data Structure, Algorithm Analysts, Power Plant development, and Renewable Energies. His understanding of energy demands as outlined in the Harambee Prosperity Plan II (HPP2), uniquely positions him to facilitate the plan's objective of increasing local energy capacity from 624 MW in 2020 to 8796 MW by 2025. His pivotal research centres on leveraging Namibia's underutilised sunlight to produce solar power for domestic consumption and neighbouring regions. As the former Deputy Director of Energy at the Ministry of Mines and Energy, he is an instrumental figure in advancing energy projects within Namibia. HPP2, covering 2022-2025, aims to expedite the deployment of renewable energy resources such as solar, wind, biomass, and green hydrogen, contributing towards net-zero emissions by 2050. Dr. Zaire is a crucial asset in achieving these goals.

Dr. Zaire excels in power plant development, electromechanical control systems, and computer system architecture, complemented by skills in financial management and enterprise networking. His expertise spans engineering, economics, data structure analysis, and culture change, notably within Telecom Namibia. His diversified skills allow him to thrive in technically demanding and competitive environments.


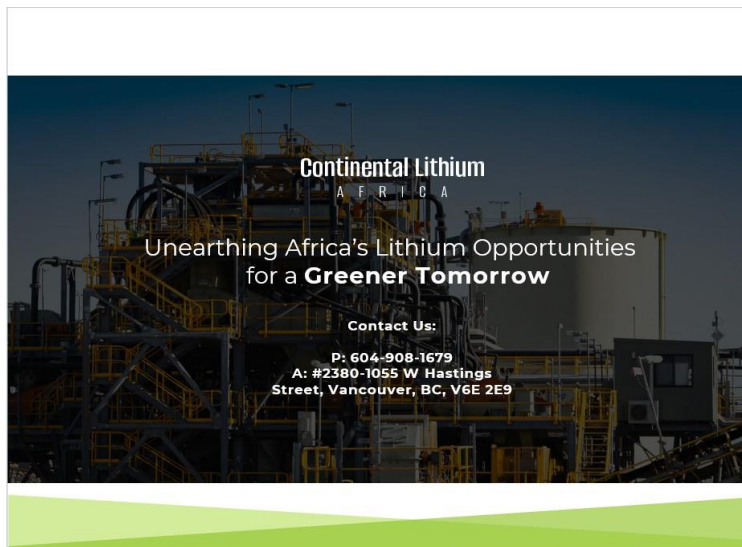
He holds a PhD and a Postgraduate degree in Science from Pace University, New York, affirming his solid academic foundation in his field.

Disclaimer

Certain statements contained in this presentation constitute forward-looking statements within the meaning of Canadian securities legislation. All statements included herein, other than statements of historical fact, are forward-looking statements which may include, without limitation, statements about Continental Lithium Africa Development Corporation ("the Company") plans for its investments and properties, the Company's business strategy, plans and outlook, the merit of the Company's investments and properties, timelines, the future financial performance of the Company, expenditures, approvals and other matters. Often, but not always, these forward-looking statements can be identified by the use of words such as "estimate", "expectation", "intention", "potential", "target", "forecast", "anticipated", "likely", "possible", "may", "could", "should", "offer", "believe", "contemplate", "reflecting", "containing", "remaining", "to be", "periodically", or statements that events, "could" or "would" occur or be achieved and similar expressions, including negative variations.

Forward-looking statements involve known and unknown risks, uncertainties and other factors which may cause the actual results, performance or achievements of the Company to be materially different from any results, performance or achievements expressed or implied by forward-looking statements. Such uncertainties and factors include, among others, changes in general economic conditions and financial markets; the Company or any joint venture partner not having the financial ability to meet its operational and development goals; risks associated with the results of exploration and development activities, estimation of mineral resources and the geology, grade and continuity of mineral deposits; unanticipated costs and expenses; and such other risks detailed from time to time in the Company's quarterly and annual filings with securities regulators and available under the Company's profile on SEDAR at www.sedar.com. Although the Company has attempted to identify important factors that could cause actual actions, events or results to differ materially from those described in forward-looking statements, there may be other factors that cause actions, events or results to differ from those anticipated, estimated or intended.

Forward-looking statements contained herein are based on the assumptions, beliefs, expectations and opinions of management, including but not limited to supervisors that the Company's activities will be in accordance with its public statements and stated goals, but all required approvals will be obtained, but there will be no material adverse change affecting the Company, its investments or properties, and such other assumptions as set out herein. Forward-looking statements are made as of the date hereof and the Company disclaims any obligation to update any forward-looking statements, whether as a result of new information, future events or results or otherwise, except as required by law. There can be no assurance that forward-looking statements will prove to be accurate, as actual results and future events could differ materially from those anticipated in such statements. Accordingly, investors should not place undue reliance on forward-looking statements.

**Continental Lithium
AFRICA**

**Unearthing Africa's Lithium Opportunities
for a Greener Tomorrow**

Contact Us:

P: 604-908-1679
 A: #2380-1055 W Hastings
 Street, Vancouver, BC, V6E 2E9

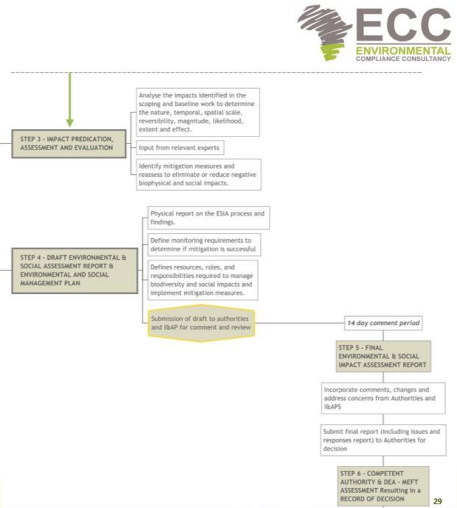
Public Participation

ASPECT	DATE
Notification of the project – newspapers & site notice boards.	Adverts: 19/04/2023 and 26/04/2023 Site Notice: TBD
The Background Information Document (BID) provided I&APs with the opportunity to take part in the public participation process.	Published on the ECC website 04/04/2023. Direct mail to I&APs 03/05/2023

- ✓ Copies have been made available to the interested and affected parties to assist them with providing informed inputs.
- ✓ This presentation extracts information from the BID to describe the project to those attending the meeting.

Process

- Screening - APP-0001259 (DEA PORTAL)
- Scoping and assessment phase – Current Phase
 - Impact prediction and evaluation of alternatives,
 - Assigning mitigation measures
- This phase culminates in the drafting of the Scoping plus impact assessment report and draft Environmental Management Plan (EMP) and
- Submission to the appropriate competent authorities.



Potential Impacts to be assessed

Potential impacts that can arise from the proposed project include but are not limited to:

- Air Quality
- Noise impacts
- Visual impacts
- Water resource impacts
- Impact on archaeological and cultural features
- Biodiversity impacts
- Socio-economic

Environmental Management Plan (EMP)

- All mitigations will be incorporated into the Environmental & Social Management Plan (ESMP).

Questions / Discussion ?



Thank You For Your Time!



Contact Us:
Tel: +264 81 669 7608
info@eccenvironmental.com

www.eccenvironmental.com 33