



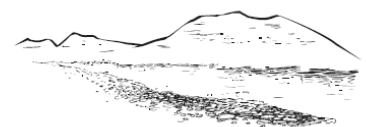
ECC
ENVIRONMENTAL
COMPLIANCE CONSULTANCY



ECC-94-214-NTS-05-C

NON-TECHNICAL SUMMARY
EXPLORATION ACTIVITIES ON EPL 6155 FOR PRECIOUS STONES,
//KARAS REGION

PREPARED FOR



GRIEP
DIAMONDS

P.O. BOX 35 KEETMANSHOOP NAMIBIA

JULY 2019

NON-TECHNICAL SUMMARY

PROPOSED EXPLORATION ACTIVITIES ON EPL 6155 FOR PRECIOUS STONES

1 PURPOSE OF THIS DOCUMENT

The purpose of this Non-Technical Summary (NTS) is to provide Interested and Affected Parties (I&APs) a background to the proposed project and to invite I&APs to register as part of the Environmental Impact Assessment (EIA) process. The project involves exploration activities on EPL 6155 for precious stones. Through registering, all I&APs will be kept informed throughout the EIA process, and a platform for participation will be provided to submit comments/recommendations pertaining to the project.

This NTS includes the following information on:

- The proposed project and location
- The necessity of the project, benefits or adverse impacts anticipated
- The alternatives to the project have been considered and assessed
- How the EIA process works
- The public participation process and how to become involved, and
- Next steps and the way forward.

2 DESCRIPTION OF PROPOSED PROJECT

2.1 BRIEF INTRODUCTION

Environmental Compliance Consultancy (ECC) has been engaged by the proponent (Gariiep Diamonds) to undertake an Environmental Impact Assessment (EIA) and an Environmental Management Plan (EMP) in terms of the Environmental Management Act, 2007 and its Regulations. An environmental clearance application will be submitted to the relevant competent authorities: The Ministry of Mines and Energy (MME) and Ministry of Environment and Tourism (MET).

2.2 LOCATION

The project is located in the //Karas Region. The site is located approximately 16.27km south-east of Rosh Pinah with the C13 route cross cutting from the north

throughout the EPL. Refer to the location map provided in FIGURE 1.

2.3 WHAT IS PROPOSED

Gariiep Diamonds undertakes mineral exploration in Namibia and propose to undertake exploration activities on EPL 6155 for precious stones in the //Karas Region.

2.4 OPERATION PHASE

The following are envisaged during the proposed project:

- Potential creation of access tracks, where existing tracks cannot be utilised
- Limited vegetation clearing for the creation of tracks, and
- Exploration methods may include mechanical digging of trenches and pits to bedrock. Small equipment such as (Tractor-Loader-Backhoe (TLB), a small tipper, one pan with conveyer, jig and generator) will be used to recover samples and then to separate gravel.

2.5 WHY IS THE PROJECT NEEDED

Gariiep Diamonds intends to pursue exploration opportunities with the aim of identifying new mining prospects. Namibia is rich in natural resources and the mining industry is one of the largest contributors to GDP in Namibia. Exploration could lead to mining activities which would contribute to the national and local economy.

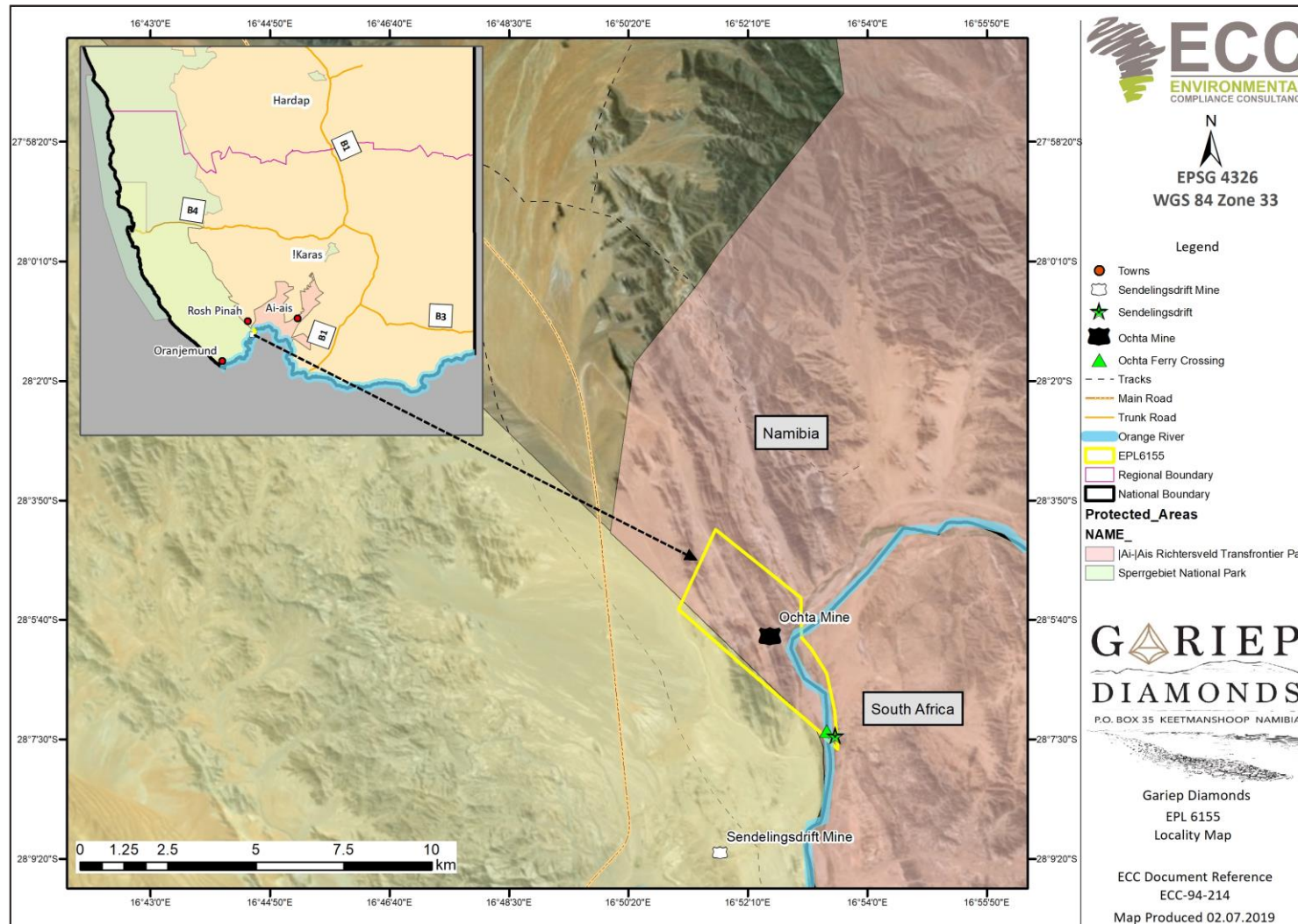


FIGURE 1 – LOCATION MAP OF THE PROPOSED PROJECT

2.6 POTENTIAL IMPACTS OF THE PROJECT

2.6.1 SOCIO-ECONOMIC

The potential social impacts are anticipated to be of low significance, and those that may transpire shall be confined within the EPL site, these potential impacts may include the following:

- Potential to unearth, damage or destroy undiscovered heritage remains
- Some jobs will be created as a result of the project, and
- There will be economic benefits due to increased investment and investor confidence in the Namibian minerals sector.

2.6.2 THE ENVIRONMENT

The potential environmental impacts are anticipated to be of minor significance, and those that may occur shall be contained within the EPL site, these potential impacts may include the following:

- Some potential ground disturbance and vegetation loss due to possible tracks creation
- Use of natural resources, including surface water
- Minor risk of loss of contaminant of hydrocarbon, chemical fluids from exploration activities potentially leading to localised ground contamination.

3 CONSIDERATION OF ALTERNATIVES

Best practice environmental assessment methodology calls for consideration and assessment of alternatives to a proposed project.

In a project such as this one, it is difficult to identify alternatives to satisfy the need of the proposed project; the activities shall be specific to the EPL 6155 which was granted by the MME on the 23rd March 2018.

During the assessment, alternatives will take the form of a consideration of optimisation and efficiency to reduce potential effects e.g. different types of technology or operations, route access and exploration methods.

4 THE ENVIRONMENTAL ASSESSMENT PROCESS

This EIA, conducted by ECC, is undertaken in terms of the Environmental Management Act, 2007 and its regulations.

The process followed in this EIA is set out in the flowchart in

FIGURE 2 below.

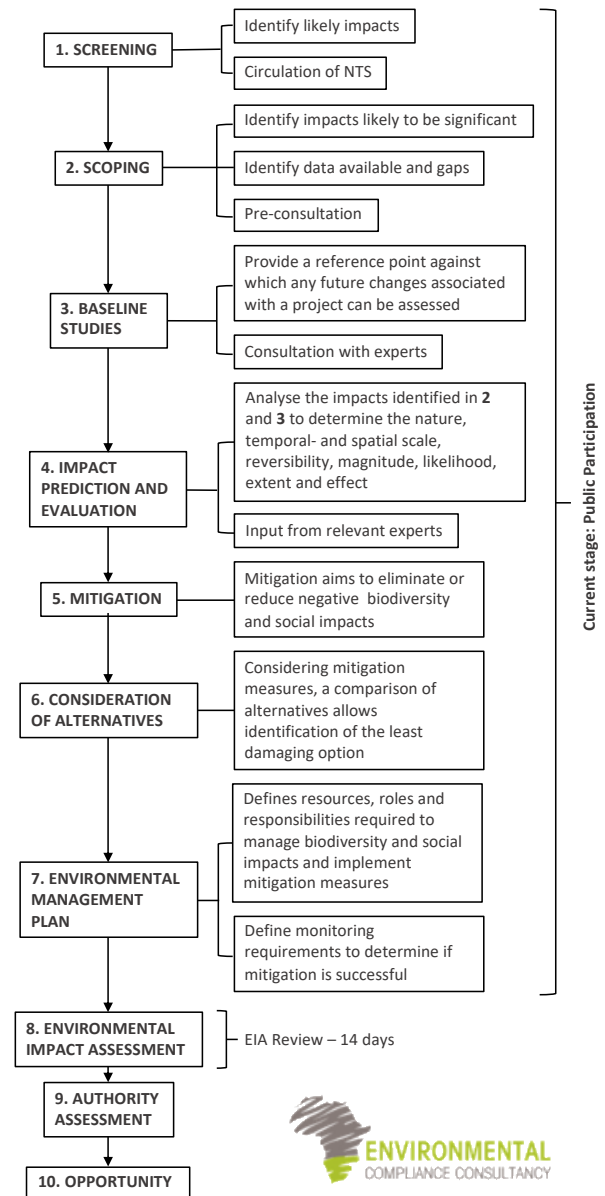


FIGURE 2 - FLOWCHART OF THE ENVIRONMENTAL ASSESSMENT PROCESS

4.1 SCREENING

A review of the proposed project screening findings against the listed activities was conducted; the findings of which are summarised below.

MINING AND QUARRYING ACTIVITIES

(3.1) The construction of facilities for any process or activities which requires a licence, right or other form of authorisation, and the renewal of a licence, right or other form of authorisation, in terms of the Minerals (Prospecting and Mining Act), 1992

- The proposed project requires a licence for extraction of precious stones

(3.2) Other forms of mining or extraction of any natural resources whether regulated by law or not

- Minerals (soil and sand), precious stones will be sourced out within the project's footprint/locally as far as possible

(3.3) Resource extraction, manipulation, conservation and related activities

- The proposed project extract will precious stones

WATER RESOURCE DEVELOPMENT

(8.1) The abstraction of ground or surface water for industrial or commercial purposes

- Surface water will be abstracted from the Orange River

(8.3) Any water abstraction from a river that forms an international boundary

- Water for the project will be abstracted from the Orange River

The potential environmental and social effects are anticipated to be of minor significance, and those that may occur shall be contained on the EPL 6155 site.

4.2 SCOPING

Due to the nature of the proposed project, and the implementation of industry best practice mitigation measures during the mineral exploration phase of the project, the effects on the environment and society are expected to be minimal and localised.

4.3 BASELINE STUDIES

For the proposed project, baseline information was obtained through a desk-based study focusing on the environmental receptors that could be affected by the proposed project. ECC will also engage with

stakeholders, I&APs and the proponent to seek input into the assessment as required.

4.4 IMPACT ASSESSMENT

The EIA will be conducted in terms of the Environmental Management Act, 2007 and its regulations. ECCs methodology for impact assessments was developed using IFC standards in particular Performance Standard 1 'Assessment and management of environmental and social risks and impacts' (International Finance Corporation, 2017), (International Finance Corporation, 2012) and Namibian Draft Procedures and Guidance for EIA and EMP (Republic of Namibia, 2008) including international and national best practice with over 25 years of combined EIA experience.

4.5 ENVIRONMENTAL MANAGEMENT PLAN

An EMP shall be developed for the proposed project setting out auditable management actions for Gariep Diamonds to ensure careful and sustainable management measures are implemented for their activities in respect of the surrounding environment and community.

4.6 PUBLIC PARTICIPATION AND ADVERTISING

Public participation is an important part of the EIA process; it allows the public and other stakeholders to raise concerns or provide valuable local environmental knowledge that can benefit the assessment, in addition it can aid the design process. This project is currently at the scoping phase and public participation phase.

At this phase ECC will perform the following:

- Identify key stakeholders, authorities, municipalities, environmental groups and interested or affected members of the public, hereafter referred to as I&APs
- Distribute the NTS for the proposed project (this document)
- Advertise the environmental application in two national newspapers
- Place notices on-site, at or near the boundary of the EPL 6155 site
- If required host a public meeting to encourage stakeholder participation and engagement, and provide details of issues identified by the

environmental practitioner, stakeholders and I&APs

- Record all comments of I&APs and present such comments, as well as responses provided to ECC, in the comments and responses report, which will be included in the scoping report that shall be submitted with the application, and
- Circulate I&AP comments to the project team for consideration of project design.

Comments must be submitted in writing and can be emailed using the details in the contact us section below.

CONTACT US

We welcome any enquiries regarding this document and its content. Please contact:

Environmental Compliance Consultancy (ECC)

info@eccenvironmental.com

Tel: +264 81 669 7608

www.eccenvironmental.com

At ECC we make sure all information is easily accessible to the public.

Follow us online to be kept up to date:

