



ECC
ENVIRONMENTAL
COMPLIANCE CONSULTANCY



ECC-110-305-NTS-01-B

NON-TECHNICAL SUMMARY FOR

A CHARCOAL & BRIQUETTE STORAGE, PROCESSING AND PACKAGING FACILITY IN
WITVLEI, OMAHEKE REGION, NAMIBIA

PREPARED FOR



JUNE 2020

NON-TECHNICAL SUMMARY

CHARCOAL & BRIQUETTE STORAGE, PROCESSING AND PACKAGING FACILITY IN WITVLEI, OMAHEKE REGION, NAMIBIA

1 PURPOSE OF THIS DOCUMENT

The purpose of this Non-Technical Summary (NTS) is to provide Interested and Affected Parties (I&APs) background to the project.

The purpose of the project is to obtain an environmental clearance certificate for the existing activities and additional developments that will be included at the existing project site in Witvlei, Omaheke Region.

By registering for the project, all I&APs will be kept informed throughout the environmental clearance certificate application process, and a platform for participation will be provided to submit comments/recommendations pertaining to the project.

This NTS includes the following information on:

- The location of the existing facility;
- The necessity of the project, benefits or adverse impacts anticipated;
- The alternatives to the project have been considered and assessed;
- How the ESIA process works;
- The public participation process and how to become involved; and
- Next steps and the way forward.

2 DESCRIPTION OF PROPOSED PROJECT

2.1 BRIEF INTRODUCTION

Environmental Compliance Consultancy (ECC) has been engaged by the proponent Namchar Namibia to undertake an ESIA and an Environmental Management Plan (EMP) in terms of the Environmental Management Act, No. of 7 of 2007 and its regulations. An environmental clearance application will be submitted to the

relevant competent authorities; and the Ministry of Environment, Forestry, and Tourism (MEFT).

2.2 LOCATION

The project is located approximately 1 kilometre north of Witvlei settlement in the Omaheke Region, Namibia. The site location is shown in Figure 1.

2.3 WHY IS THE PROJECT NEEDED

Charcoal production in Namibia presents strategies to combat bush encroachment, supplement farming income, and contribute to employment creation. Namchar Namibia, through its current facility, will continue storing, processing and packaging charcoal for exporting internationally and local market distribution. Namchar will continue to increase its current revenue and sustain its direct employment.

2.4 WHAT ARE THE PROJECT ACTIVITIES

It should be noted that the Namchar is operating at an existing facility. The following activities and infrastructure are associated with the project:

- Continued operation of existing charcoal and briquette storage, processing, and packaging facility, offices, as well as toilet facilities.
- Water is sourced via the NamWater pipeline system.
- Electricity is supplied by a three (3) phase NamPower electricity network.
- New infrastructure to be built includes: a weighbridge to be built in the future.

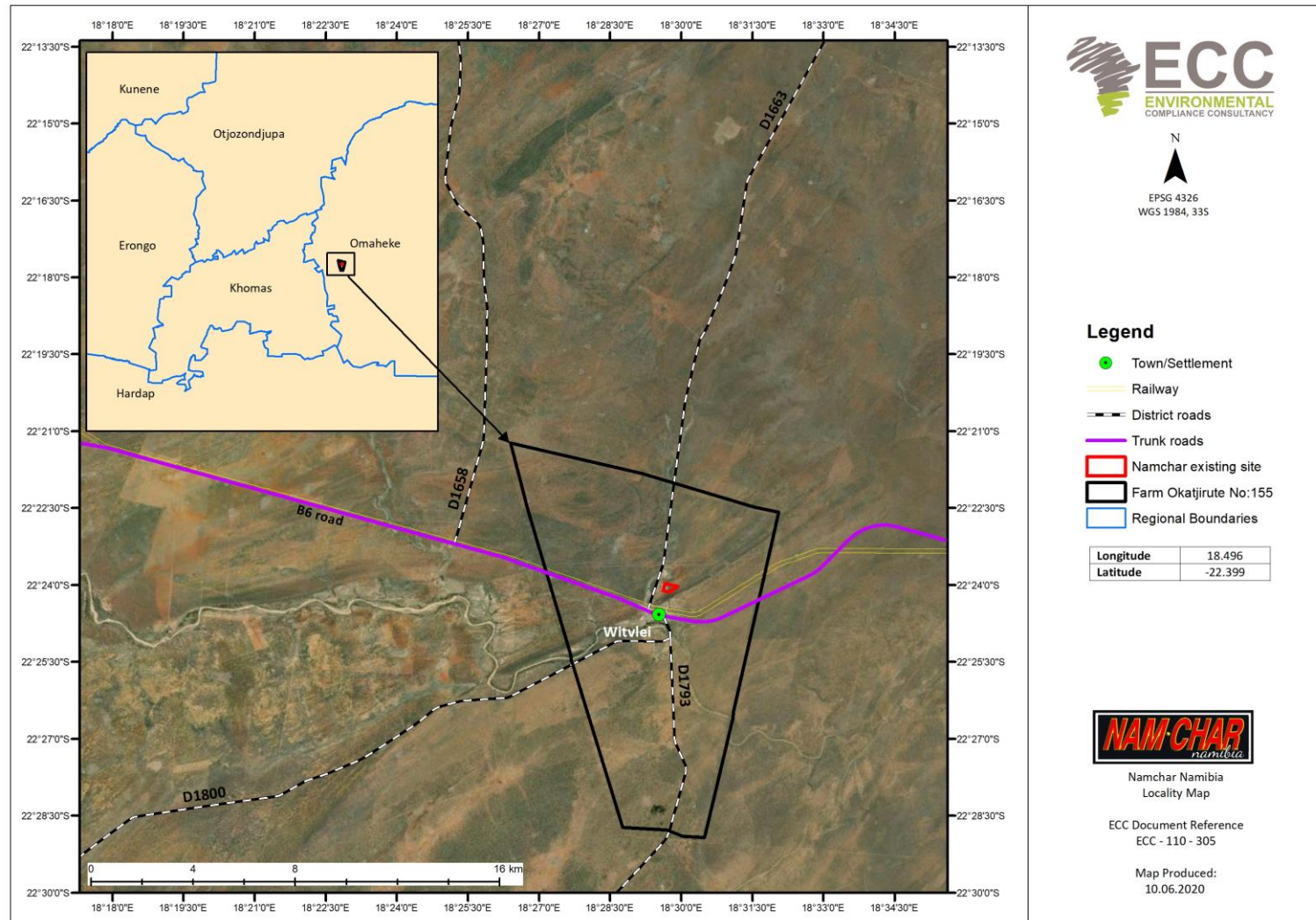


FIGURE 1 – LOCATION OF NAMCHAR NAMIBIA FACILITIES

2.5 POTENTIAL IMPACTS OF THE PROJECT

2.5.1 SOCIO-ECONOMIC

The potential social impacts are anticipated to be of low significance, and those that may transpire shall be confined within the project site: these potential impacts may include the following:

- Potential economic benefits due to increased foreign currency flow, and
- Approximately 60 new jobs will be created as a result of the project.

2.5.2 ENVIRONMENTAL

The potential environmental impacts are anticipated to be of minor significance, and those that may occur shall be contained within the site, these potential impacts may include the following:

- Generation of noise due to the handling and processing of charcoal during operations, and
- Generation of dust due to the handling and processing of charcoal during operations.

3 CONSIDERATION OF ALTERNATIVES

Best practice environmental assessment methodology calls for consideration and assessment of alternatives to the project.

The project is operating at an existing facility with existing activities. The additional developments (weighbridge) will be constructed on already disturbed footprint at the existing site. Therefore, no other alternatives were considered.

During the assessment, alternatives will take the form of consideration of optimisation and efficiency to reduce potential effects.

4 THE ENVIRONMENTAL ASSESSMENT PROCESS

This EIA, conducted by ECC, is undertaken in terms of the Environmental Management Act, 2007, and its regulations. The process followed in this EIA is set out in the flowchart in figure 2.

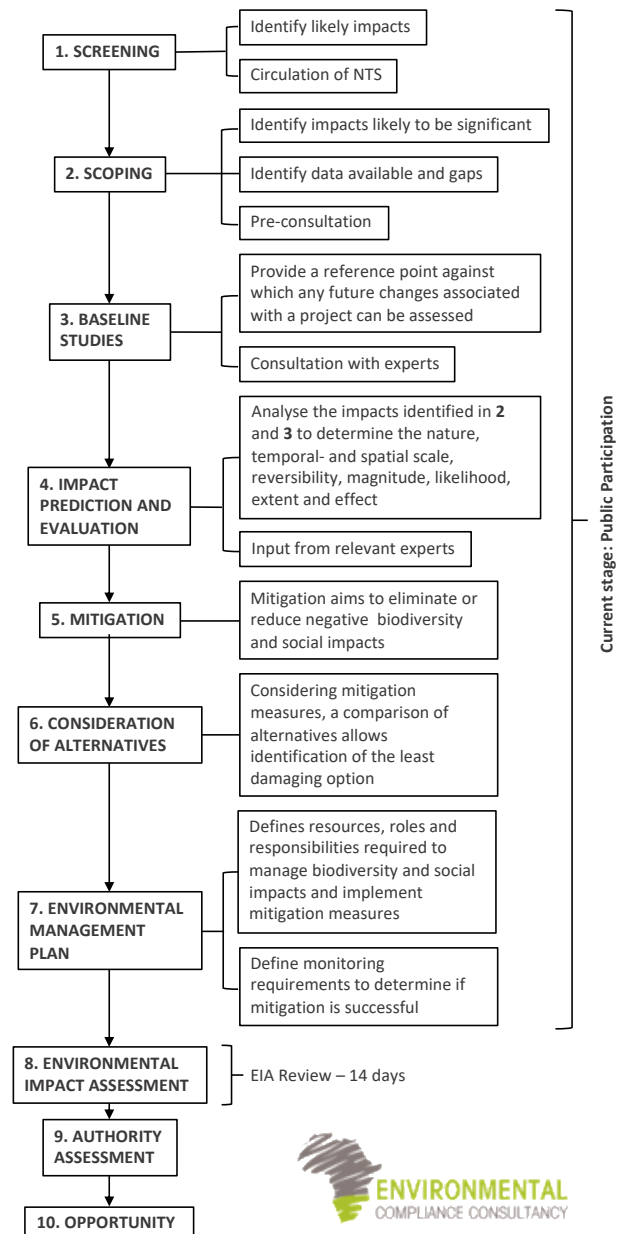


FIGURE 2 - FLOWCHART OF THE ENVIRONMENTAL ASSESSMENT PROCESS

4.1 SCREENING

A review of the project screening findings against the listed activities was conducted; the findings of which are summarised below:

ENERGY GENERATION, TRANSMISSION AND STORAGE ACTIVITIES (EXISTING ACTIVITY)

1 The construction of facilities for –

- (b) The transmission and supply of electricity
 - The project is supplied with electricity by NamPower with a three (3) phase electricity network at 155kW per day.

WASTE MANAGEMENT, TREATMENT, HANDLING AND DISPOSAL ACTIVITIES (EXISTING ACTIVITY)

2.2 Any activity entailing a scheduled process referred to in the Atmospheric Pollution Prevention Ordinance, 1976.

- The project will generate dust due to the handling and processing of charcoal during operations.

LANDUSE AND DEVELOPMENT ACTIVITIES (POSSIBLE ACTIVITY)

5.1 The rezoning of land from – agriculture use to industrial use

- The project is currently on an agricultural zoned area. There is the possibility of rezoning from agriculture to industrial zoning.

WATER RESOURCE DEVELOPMENTS (EXISTING ACTIVITY)

8.6 Construction of industrial and domestic wastewater treatment plants and related pipeline systems. (Possible activity)

- There is a French drain system presently on site. It is recommended that the client constructs a wastewater treatment plant and related pipeline system.

HAZARDOUS SUBSTANCES TREATMENT, HANDLING, AND STORAGE

9.2 Any process or activity which requires a permit, licence or other form of authorisation, or the modification of or changes to existing facilities

for any process or activity which requires an amendment of an existing permit, licence or authorisation or which requires a new permit, licence or authorisation in terms of a law governing the generation or release of emissions, pollution, effluent or waste. (Existing activity)

- There is a French drain system presently on site.

The potential environmental and social effects are anticipated to be of minor significance, and those that may occur shall be contained on the project site.

4.2 BASELINE STUDIES

For the project, baseline information will be obtained through a desk-based studies and site verification process by focusing on the environmental receptors that could be affected by the project. ECC will also engage with stakeholders, I&APs and the proponents to seek input into the assessment.

4.3 IMPACT ASSESSMENT

Impacts will be assessed using the ECC EIA methodology. The EIA will be conducted in terms of the Environmental Management Act, No. 7 of 2007 and its regulations. ECC's methodology for impact assessments was developed using IFC standards in particular Performance Standard 1 'Assessment and management of environmental and social risks and impacts' (IFC 2012, 2017) and Namibian Draft Procedures and Guidance for EIA and EMP (GRN, 2008) including international and national best practice with over 25 years of combined EIA experience.

4.4 ENVIRONMENTAL MANAGEMENT PLAN

An EMP shall be developed for the project, setting out auditable management actions for the project to ensure careful and sustainable management measures are implemented for their activities in respect to the surrounding environment and community.

4.5 PUBLIC PARTICIPATION AND ADVERTISING

Public participation is an important part of the EIA process; it allows the public and other stakeholders to raise concerns or provide valuable local environmental knowledge that can benefit the assessment, in addition it can aid the design process. This project is currently at the scoping phase and the public participation phase.

At this phase ECC will perform the following:

- Identify key stakeholders, authorities, municipalities, environmental groups and interested or affected members of the public, hereafter referred to as I&APs
- Distribute the NTS for the project (this document)
- Advertise the environmental application in two national newspapers
- Place notices on-site at or near the boundary
- If required host a public meeting to encourage stakeholder participation and engagement, and provide details of issues identified by the environmental practitioner, stakeholders and I&APs
- Record all comments of I&APs and present such comments, as well as responses provided by ECC, in the comments and responses report, which will be included in the scoping report that shall be submitted with the application, and
- Circulate I&AP comments to the project team for consideration of project design.

Comments must be submitted in writing and can be emailed using the details in the contact us section below.

CONTACT US

We welcome any enquiries regarding this document and its content. Please contact:

Environmental Compliance Consultancy (ECC)

info@eccenvironmental.com

Tel: +264 816 697 608

www.eccenvironmental.com

At ECC we make sure all information is easily accessible to the public.

Follow us online to be kept up to date:

